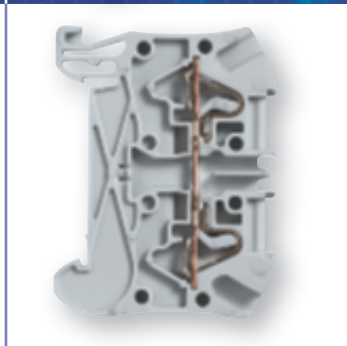
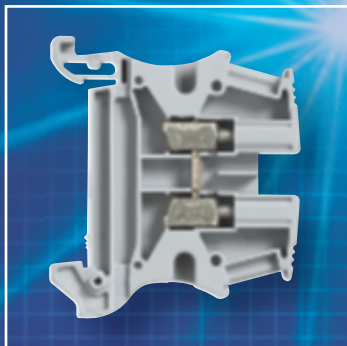


New Viking™ 3, the innovation

Screw or automatic spring connection

EX 29026



A NEW RANGE,
BORN OF RESEARCH & EXPERIENCE

 **legrand**®

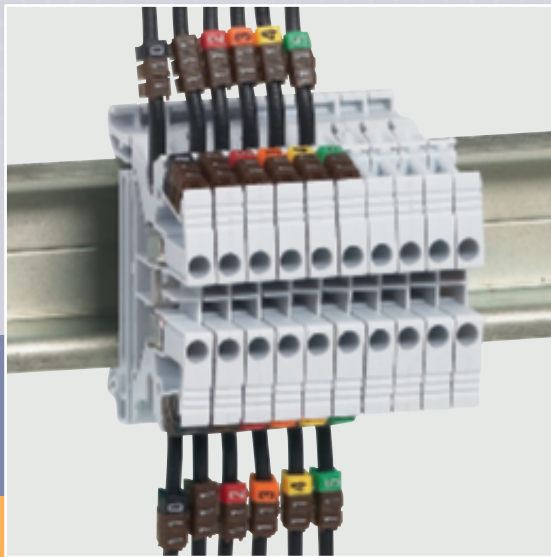
INDEX

—▶ Screw connection	2
—▶ Automatic spring connection	4
—▶ Common accessories	6
—▶ Catalogue pages	8
▶ Selection table	8
▶ Viking 3	14
▶ CAB 3 marking and isolating sleeves	26
▶ CAB 3 marking system	27
▶ Starfix ferrules and crimping tools	30



For over 30 years, Legrand has produced Viking 3 screw terminal blocks in its Normandy factories for the whole world. Millions of wiring installers have used the different generations. They are constantly providing ideas for improvement which today make them a benchmark in the connection field.

Viking 3 terminal blocks are the core of a reliable and easy to use connection system, together with CAB 3 marking system and Starfix ferrules and crimping tools.



Viking 3 terminal blocks and their CAB 3 marking system

NEW VIKING™ 3, THE INNOVATION

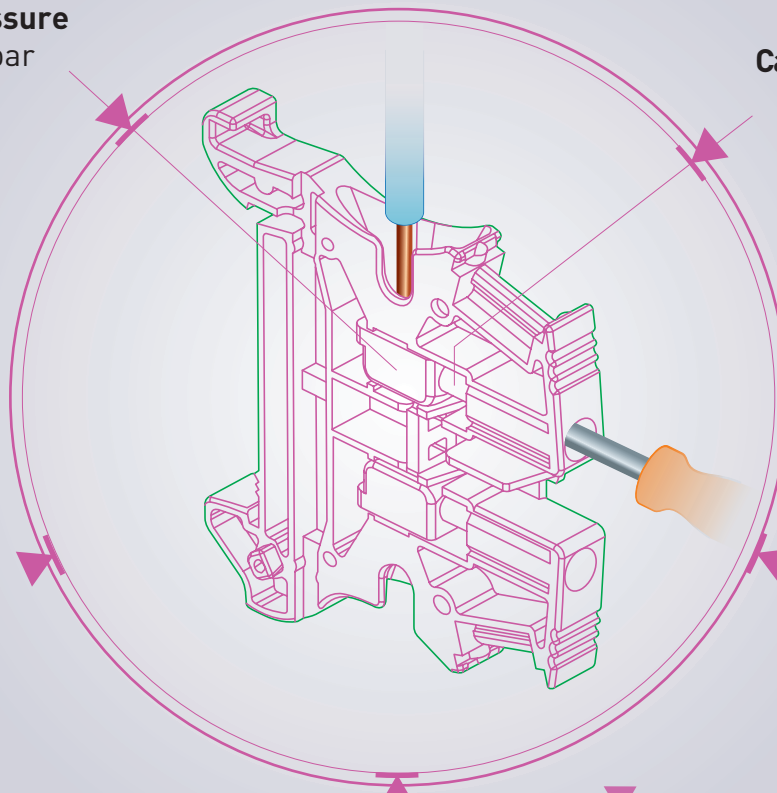
Strength and security:

scre

High contact pressure
using the clamp/bar
system

Captive screw

Excellent mechanical strength
with a specially selected clamp
made of surface-treated steel ⁽¹⁾

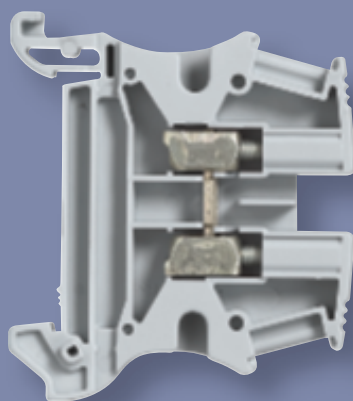


Clamping tried and tested for strength,
pulling-out,
destructive
torque resistance
and ageing

Perfect electrical conduction with the tinned
brass bar ⁽¹⁾

Permissible cross-sections:
0.25 mm² to 70 mm²
(flexible wire) and 0.25 mm²
to 95 mm² (rigid wire)

⁽¹⁾ Complies with RoHS (Restriction of Hazardous Substances) requirements



International approvals:
UL/CSA/NF/VDE/IMQ/BV
ATEX certification



Conforms to IEC EN 60947-7-1,
IEC EN 60947-7-2 and IEC EN 60947-7-3

→ **The ot**

Optimize
and stand
bring com
range and
and mark

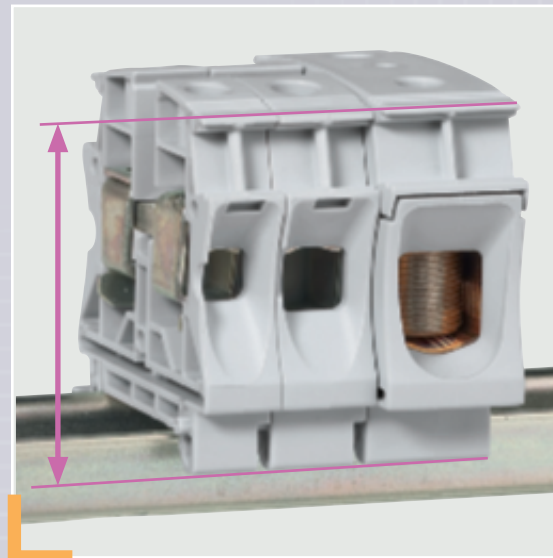


Direct screwless
rail for protection
(for pitches of 5

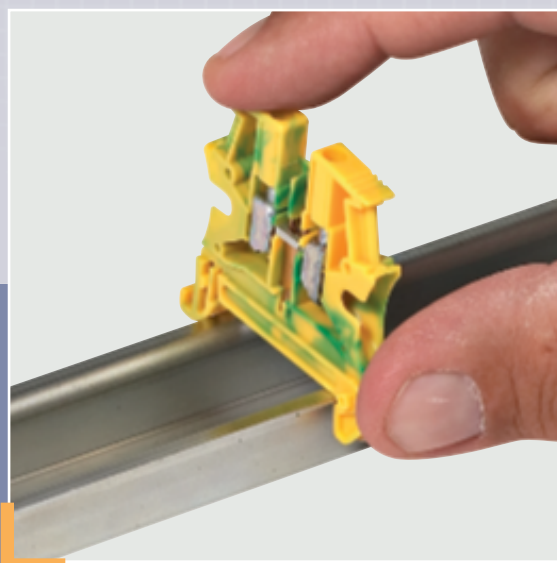
screw connexion

► The other innovations

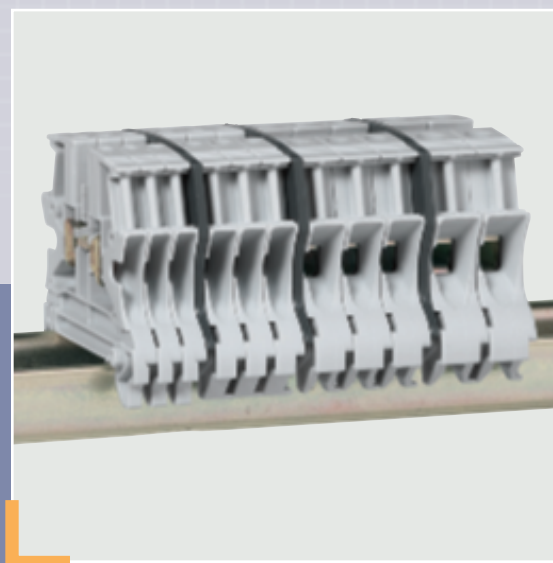
Optimized size, simplified fixing and standardized end caps systems bring comfort of use for the new Viking 3 range and make installation, connection and marking easier than ever.



Identical height for blocks of 16 mm² to 70 mm²



Direct screwless fixing on rail for protection conductor modules (for pitches of 5 to 10)



Single end caps for pitches of 5 to 10

NEW VIKING™ 3, THE INNOVATION

Reliability and time saving:

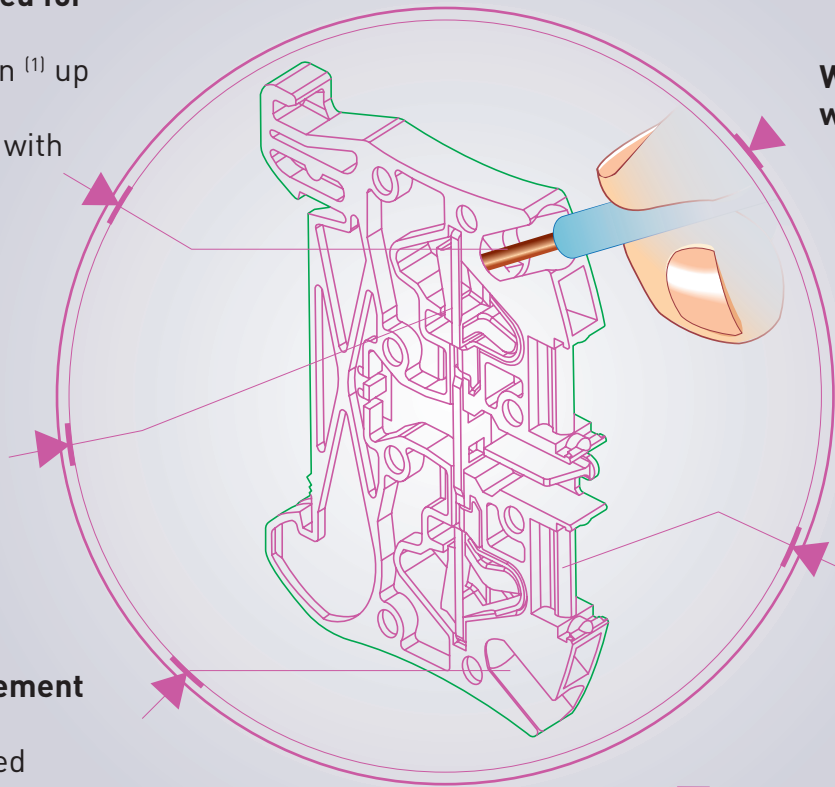
auto

No tool required for connection:

Direct insertion ⁽¹⁾ up to pitch of 6.
Disconnection with screwdriver

Constant contact pressure

Better management of wires with the inclined cable entries

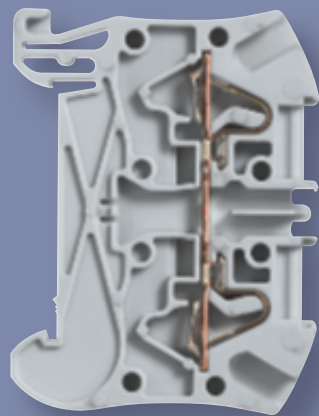


With or without ferrule

Double central marking area

Permissible cross-sections:
0.5 mm² to 16 mm²

(1) For a flexible wire with no ferrule, the spring is opened using a screwdriver



International approvals:
UL/CSA/NF/VDE/IMQ/BV
ATEX certification



Conforms to IEC EN 60947-7-1,
IEC EN 60947-7-2 and IEC EN 60947-7-3

► The other

Actively U...
resulted in...
Developme...
an innovat...
terminal b...
above con...
advantage

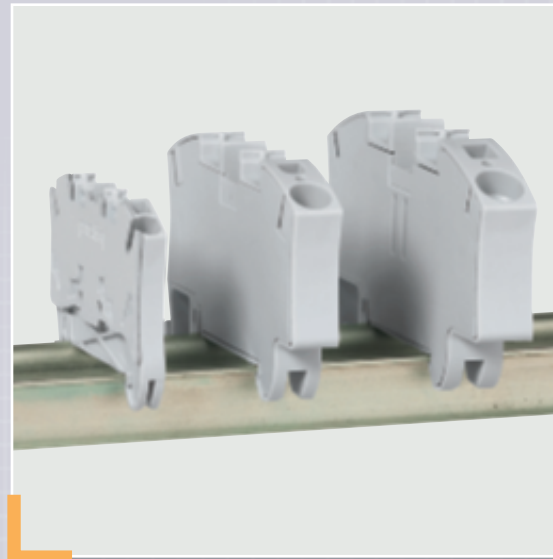


Bridging combs a

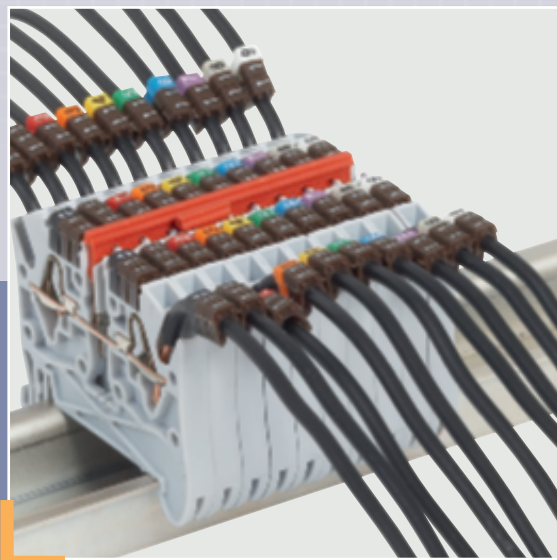
ing: automatic spring connection

► The other innovations

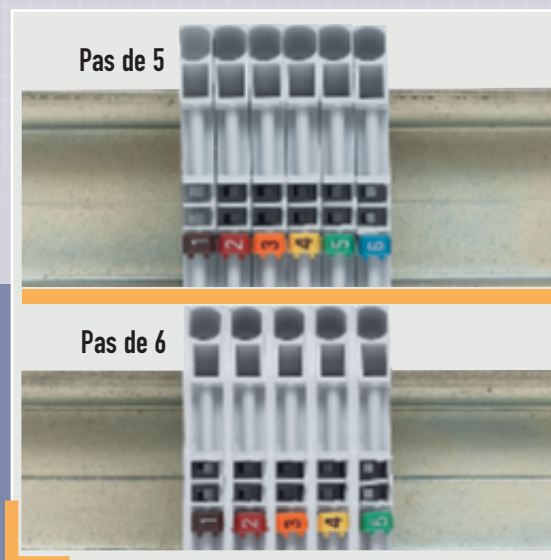
Actively listening to installers has resulted in Legrand's Research & Development department creating an innovative new Viking 3 spring terminal block which, over and above connection quality, has many advantages.



Integrated end caps for pitches of 6 to 12



Bridging combs and markings are perfectly visible



Optimized terminal block size. Identical electrical characteristics for blocks with a pitch of 5 and those with a pitch of 6 (one block gained every 5 blocks with a pitch of 5)

r
t ferrule

Double central
marking area

Cross-sections:
mm²

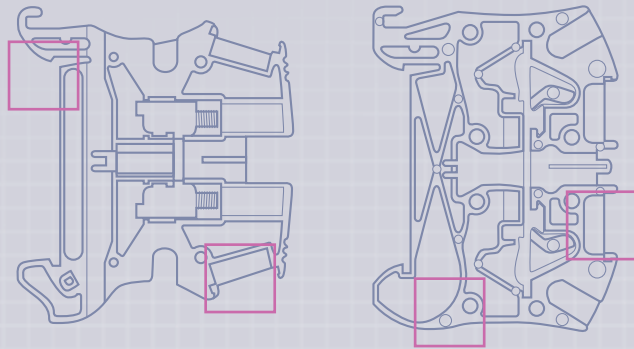
1,
60947-7-3

NEW VIKING™ 3

Screw or automatic spring:

more convenient wiring and easier use

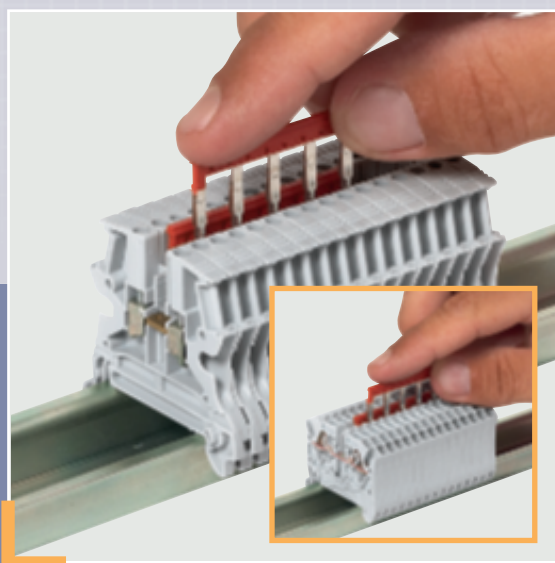
thanks



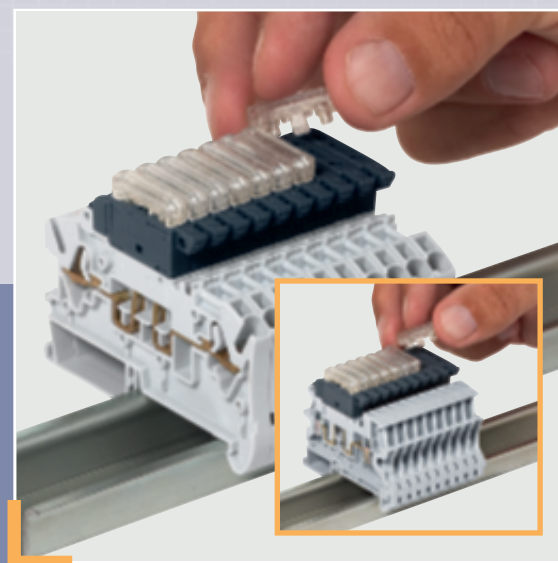
End stop: screwless fixing



Managing cable shielding accessories



Automatic-insertion bridging comb up to pitch of 8, 2 areas allowing pitch jumps



Blown fuse indicator can be added at the last moment (12/48 V or 110/250 V)

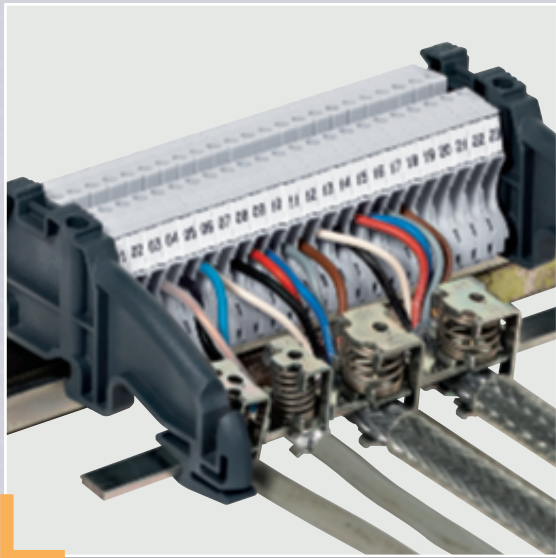


Possibility of either manual

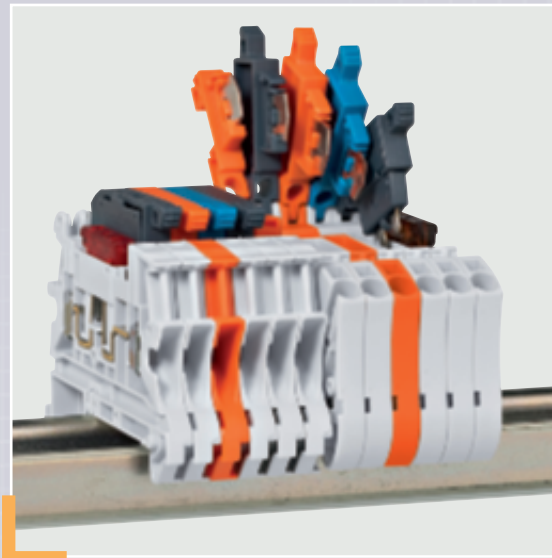
ing:

se

thanks to common accessories.



Managing cable shielding with dedicated accessories



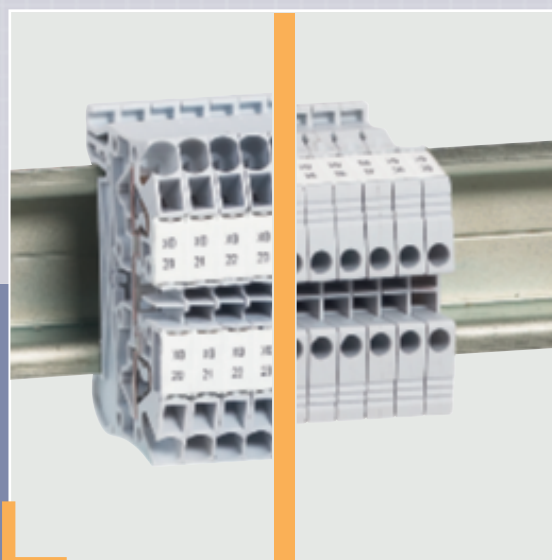
Addition of functions on module for equipping: standard, neutral or protected isolation, mini-circuit-breaker, automotive-type fuse, etc.



the last moment



Possibility of either manual marking (CAB 3)...



...and computerized (Logicab 2)



Viking™ 3 terminal blocks with screw connection and accessories NEW
for copper cable

		ELECTRICAL FUNCTION	TERMINAL BLOCK							
			Nominal cross-section (mm ²)	Pitch (mm)	Colour	Cat. No.				
	Connecting (p. 14)	1 connection - 1 entry/1 outlet		2.5	5	371 61, 371 63, 371 64, 371 66, 371 69, 371 68				
				4	6	371 61, 371 63, 371 64, 371 66, 371 69, 371 68				
				6	8	371 61, 371 63, 371 64, 371 66, 371 69, 371 68				
				10	10	371 61, 371 63, 371 64, 371 66, 371 69, 371 68				
				16	12	371 61, 371 63, 371 64, 371 66, 371 69, 371 68				
				35	15	371 61, 371 63, 371 64, 371 66, 371 69, 371 68				
				70	22	371 61, 371 63, 371 64, 371 66, 371 69, 371 68				
		1 connection - 2 entries/2 outlets		4	6	371 00, 371 08				
		2 connections on 2 levels		2.5	5	371 20, 371 30				
				4	6	371 20, 371 30				
		3 connections on 3 levels		2.5	5	371 20, 371 30				
	For protection conductor (p. 14)	1 connection - 1 entry/1 outlet - metal base		2.5	5	371 71, 371 76, 371 78, 371 79				
				4	6	371 71, 371 76, 371 78, 371 79				
				6	8	371 71, 371 76, 371 78, 371 79				
				10	10	371 71, 371 76, 371 78, 371 79				
				16	12	371 71, 371 76, 371 78, 371 79				
				35	15	371 71, 371 76, 371 78, 371 79				
		1 connection - 1 entry/1 outlet - plastic base ⁽¹⁾		4	6	371 71, 371 76, 371 78, 371 79				
				6	8	371 71, 371 76, 371 78, 371 79				
		1 connection - 2 entries/2 outlets - metal base		4	6	371 71, 371 76, 371 78, 371 79				
	Disconnect (p. 15)	1 connection		Open (to be equipped)	2.5	6	371 80, 371 81, 371 84, 371 86, 371 87			
				For fuse cartridge 5 x 20 with handle lever						
				For fuse cartridge 5 x 20 with handle lever + blown fuse indicator						
				For neutral circuit with handle lever						
				For standard circuit						
				For circuit not broken						
				For fuse cartridge 5 x 20 with screwed plug						
				For fuse cartridge 6.3 x 32 with screwed plug						
								10	12	371 80, 371 81, 371 84, 371 86, 371 87
								371 80, 371 81, 371 84, 371 86, 371 87		
	Function blocks (p. 15)	1 connection	Modular		2.5	5	371 53, 371 56			
			Diode carrier 1N4007		2.5	5	371 53, 371 56			
		2 connections on 2 levels	Diode carrier 1N4007		4	6	371 53, 371 56			
			With voltage presence LED		4	6	371 53, 371 56			
	For sensor and actuator (p. 15)	3 connections on 3 levels	Sensor		2.5	5	371 51, 371 52, 371 92			
			Actuator							
			Phase/Neutral/Earth							
PNE (p. 14)	1 connection	Disconnect for measuring circuit		4	8	371 51, 371 52, 371 92				
Measurement (p. 15)	1 connection	Disconnect for measuring circuit		4	8	371 51, 371 52, 371 92				

(1) Can be used for protection conductor inside class II equivalent assemblies
 (2) Blown fuse indicator 12/24/48 V = /~ Cat.No 375 24 or 110/250 V~ Cat.No 375 25
 (3) Or end stop Cat.No 375 10

(4) Upper level
 (5) Lower level only
 (6) Lower and intermediate levels

Red catalogue numbers: New products

BAT
 Date:
 Nom RMP:
V. Desmons
 H. Bosselin
 Nom Chef de Pub:
P. PERICLE
 Signature :

Old range (p. 12-13) available while stocks last

ELECTRICAL FUNCTION	TERMINAL BLOCK				INSULATION		EQUIPOTENTIAL LINK					PROTECTION		MEASURE- MENT	ASSOCIATED PRODUCTS
	Nominal cross-section (mm ²)	Pitch (mm)	Colour	Cat.Nos	End cap	Separation and insulation divider	Comb for 2 blocks, auto. front	Comb for 3 blocks, auto. front	Comb for 10 blocks, auto. front	Comb for 12 blocks, side	Bar for 12 blocks, front	Single pole screen	Cut to length screen	Test socket	
	2.5	5		371 60	375 50 ⁽³⁾	375 60	375 02		375 01			375 65	375 68	375 27	 End stops (p. 18)
				371 00											
				371 20											
	4	6		371 30	375 50 ⁽³⁾	375 60	375 05		375 04			375 65	375 68	375 27	 Label holder for end stop (p. 18)
				371 61											
				371 01											
				371 21											
6	8		371 31	375 50 ⁽³⁾	375 60	375 08	375 07				375 66	375 68	375 27	 Handle lever mini lever (p. 19)	
			371 77												
10	10		371 62	375 50 ⁽³⁾	375 60					375 40	375 66	375 68	375 75		
			371 02												
16	12		371 78	375 51	375 61						375 42	375 67	375 69	375 76	
			371 04												
35	15		371 05	375 51	375 61						375 44	375 67	375 69	375 76	
			371 06												
70	22		371 66	built-in											
	4	6		371 69	375 52	375 62	375 05		375 04					375 27	
				371 09											
	2.5	5		371 67	375 53	375 63	375 02		375 01					375 27 ⁽⁴⁾	
				371 07											
	4	6		371 68	375 53	375 63	375 05		375 04					375 27 ⁽⁴⁾	
				371 08											
	2.5	5		371 51	375 54	375 54	375 02 ⁽⁴⁾		375 01 ⁽⁴⁾	375 46 ⁽⁶⁾	375 47 ⁽⁶⁾			375 27 ⁽⁴⁾	 Joining rods for disconnect blocks (p. 19)
				371 52											
	2.5	5		371 70	375 50 ⁽³⁾										
				371 71											
				371 72											
				371 73											
				371 74											
4	6		371 75	375 51											
			371 76												
	4	6		371 77	375 50 ⁽³⁾	375 60	375 05		375 04			375 65	375 68		
				371 78											
	6	8		371 79	375 52							375 66	375 68		
				371 80											
	2.5	6		371 80	375 55	375 62	375 05		375 04					375 27	
				371 81											
				371 81 + 375 24/25 ⁽²⁾											
				371 82											
				371 83											
				371 84											
				371 85											
	371 86														
	10	12		371 87	375 56									375 27	 Blown fuse indicators (p. 19)
				371 88											
	2.5	5		371 53	375 55		375 02		375 01					375 27	
				371 54											
	4	6		371 55	375 53	375 63	375 05		375 04					375 27 ⁽⁴⁾	
				371 56											
	2.5	5		371 51	375 54	375 54	375 02 ⁽⁴⁾		375 01 ⁽⁴⁾	375 46 ⁽⁶⁾	375 47 ⁽⁶⁾			375 27 ⁽⁴⁾	
				371 52											
	4	8		371 92	375 57										375 77

Red catalogue numbers: New products

Date: **BAT**
 Nom RMP:
V. Desmons
H. Bosselin
 Nom Chef de Pub:
P. PERICLE
 Signature :



Viking™ 3 terminal blocks with spring connection and accessories NEW
for copper cable

		ELECTRICAL FUNCTION	TERMINAL BLOCK			
			Nominal cross-section (mm ²)	Pitch (mm)		
372 60 372 61 372 64 372 40 372 69 372 68 372 02 372 47 372 21 372 42	Connecting (p. 16)	1 connection - 2 wires - 1 entry/1 outlet		4	5	
				4	6	
				6	8	
				10	10	
		1 connection - 3 wires - 1 entry/2 outlets		4	5	
				4	6	
		1 connection - 4 wires - 2 entries/2 outlets		4	5	
				4	6	
		2 connections - 4 wires - 2 levels		4	5	
				4	6	
372 70 372 71 372 72 372 12	For protection conductor (p. 16)	1 connection - 2 wires - 1 entry/1 outlet - metal base		4	5	
				4	6	
				6	8	
				10	10	
		1 connection - 3 wires - 1 entry/2 outlets - metal base		4	5	
				4	6	
1 connection - 4 wires - 2 entries/2 outlets - metal base		4	5			
		4	6			
372 80 372 82 372 83 372 84	Disconnect (p. 17)	1 connection 2 wires		2.5	6	
						Open (to be equipped)
						For fuse cartridge 5 x 20 with handle lever
						For fuse cartridge 5 x 20 with handle lever + blown fuse indicator
						For neutral circuit with handle lever
						For standard circuit
For circuit not broken						
372 54	Function blocks (p. 17)	1 connection 4 wires 2 entries/2 outlets	Diode carrier 1N4007	4	5	
		2 connections 4 wires 2 levels	Diode carrier 1N4007			
			With voltage presence LED			

(1) Blown fuse indicator 12/24/48V~/~ Cat.No 375 24 or 110/250V~/~ Cat.No 375 25 (3) Upper level only
(2) Lower level only

Red catalogue numbers: New products

BAT
Date:
Nom RMP:
V. Desmons
H. Bosselin
Nom Chef de Pub:
P. PERICLE
Signature :

Old range (p. 12-13) available while stocks last

ELECTRICAL FUNCTION	TERMINAL BLOCK				INSULATION		EQUIPOTENTIAL LINK			MEASUREMENT	ASSOCIATED PRODUCTS
	Nominal cross-section (mm ²)	Pitch (mm)	Colour	Cat.Nos	End cap	Separation and insulation divider	Comb for 2 blocks	Comb for 3 blocks	Comb for 10 blocks	Test socket	
	4	5	372 60	375 86	375 95	375 02	375 01	375 27			
			372 00								
			372 20								
	4	6	372 61	built-in	375 95	375 05	375 04	375 27			
			372 01								
6	8	372 62	built-in		375 08	375 07	375 27				
		372 02									
10	10	372 63	built-in		375 82		375 27				
		372 03									
16	12	372 64	built-in		375 85		375 27				
		372 04									
	4	5	372 40	375 87	375 95	375 02	375 01	375 27			
			372 41								
			372 42								
4	6	372 43	built-in	375 95	375 05	375 04	375 27				
		372 44									
	4	5	372 46	375 88	375 95	375 02	375 01	375 27			
			372 47								
4	6	372 69	built-in		375 05	375 04	375 27				
		372 09									
	4	5	372 67	375 89	375 96	375 02	375 01	375 27 ⁽³⁾			
			372 07								
			372 08								
	4	5	372 70	375 86							
			372 71								
			372 72								
			372 73								
	6	8	372 74	built-in							
			372 74								
			372 74								
			372 74								
	4	5	372 10	375 87							
			372 11								
			372 12								
			372 79								
	4	6	372 80	375 90		375 05	375 04	375 27			
			372 81								
			372 81 + 375 24/25 ⁽¹⁾								
			372 82								
	2.5	6	372 83	375 90		375 05	375 04	375 27			
			372 84								
			372 85								
			372 86								
	4	5	372 54	375 88	375 95	375 02	375 01				
			372 55								
			372 56								

Red catalogue numbers: New products

Date: **BAT**
 Nom RMP: **V. Desmons**
 H. Bosselin
 Nom Chef de Pub: **P. PERICLE**
 Signature :



Viking™ 3 power terminal blocks

	ELECTRICAL FUNCTION	TERMINAL BLOCK				INSULATION Separation and insulation divider	EQUIPOTENTIAL LINK Shunt	PROTECTION		ASSOCIATED PRODUCTS CAB 3 (p. 27)
		Max. connection (mm²)	Pitch (mm)	Cat.Nos				Cover 4 blocks	Cover 3 blocks	
	Cable - cable		42	390 10			394 46			
			55	390 11			394 47			
	Cable lug - Cable lug		36	390 13			394 46			
			42	390 14			394 46			
	Cable lug - Cable		55	390 15			394 47			
			42	390 17			394 46			
	Cable - Cable lug		55	390 18			394 47			
			42	390 20			394 46			
	For busbars or eyelets		35	26	390 71 ⁽¹⁾	390 31	394 77		394 88	
			70	34	390 72 ⁽¹⁾	390 32	394 78		394 86	
120			34	390 73 ⁽¹⁾	390 33	394 78		394 86		
240			46	390 74 ⁽¹⁾	390 34	394 78		394 89 394 86		

(1) Available March 2009

old range: Viking™ 3 terminal blocks and accessories and equivalences between old/new range

Old range available while stocks last

SCREW CONNECTION					SCREW CONNECTION (CONTINUED)									
	TERMINAL BLOCKS					TERMINAL BLOCKS								
	Nominal capacity (mm²)	Pitch (mm)	Cat.Nos (old range)	Cat.Nos (new range)		Nominal capacity (mm²)	Pitch (mm)	Cat.Nos (old range)	Cat.Nos (new range)					
Standard	1 connection	2.5	5	390 60	371 60	For neutral conductor	1 connection	2.5	5	393 00	371 00			
		4	6	390 61	371 61			4	6	393 01	371 01			
		6	8	390 62	371 62			6	8	393 02	371 02			
		10	10	390 64	371 63			10	10	393 03	371 03			
		16	12	390 66	371 64			16	12	393 04	371 04			
		35	15	390 68	371 65			35	15	393 05	371 05			
		70	22	390 70	371 66			4	6	393 07	371 08			
Function blocks	2 connections 2 levels	Shunted	4	6	390 76	371 69	For circuit not broken	1 connection	2.5	5	393 37	371 20		
		Diode carrier	4	6	390 80	371 55		1 disconnect connection	4	6	393 39	371 21		
		With voltage presence LED	4	6	390 81	371 56		4	6	393 38	371 85			
Disconnect	1 connection	Blade type	4	6	390 84	371 84	For sensor/actuator PNE	3 connections 3 levels	Sensor/power supply unit	2.5	5	390 51	371 51	
		Neutral equipped	4	8	390 85	371 82			Actuator/power supply unit	2.5	5	390 52	371 52	
		For cartridge 5 x 20	4	8	390 86	371 81			Phase/Neutral/Earth	2.5	5	390 52	371 52	
		For cartridge 6.3 x 32	4	8	390 87 ⁽¹⁾	371 81 + 375 25		For special circuits	1 connection - red	2.5	5	393 29	371 30	
		For cartridge 5 x 20	4	8	390 88	-			1 connection - red	4	6	393 30	371 31	
		2 connections 2 levels	1 connection - white	2.5	5	393 31			-	1 connection - white	4	6	393 32	-
			1 connection - brown	2.5	5	393 33			-	1 connection - brown	4	6	393 33	-
For protection conductor	1 connection	Metal base	1 connection - brown	2.5	5	393 35	-	For protection conductor	1 connection - Metal base	2.5	5	393 70	371 70	
			1 connection - purple	2.5	5	393 36	-			4	6	393 71	371 71	
			1 connection - purple	4	6	393 36	-			6	8	393 72	371 72	
			2 connections - 2 levels - Metal base	4	6	393 73	371 79			10	10	393 74	371 73	
			1 connection - Plastic base	4	6	393 81	371 77			16	12	393 76	371 74	
			1 connection - Metal base - bare terminal	6	8	393 82	371 78			35	15	393 78	371 75	
				35	15	393 96	371 76							

(1) With blown fuse indicator (neon bulb 230 V~)

Red catalogue numbers: New products

BAT
Date:
Nom RMP:
V. Desmons
H. Bosselin
Nom Chef de Pub:
P. PERICLE
Signature :

old range: Vi and equivalences be

SPRING CONNECTION



Standard

1 connect

2 connect
2 levels

For neutral conductor

1 connect

2 connect
2 levels

Disconnect

1 connect

Diode carrier

1 connect

For protection conductor

1 connect

2 connect
2 levels

END STOPS

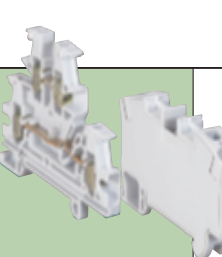
12 pitch end stop, tri-rail

8 pitch end stop, rail

8 pitch end stop, rail

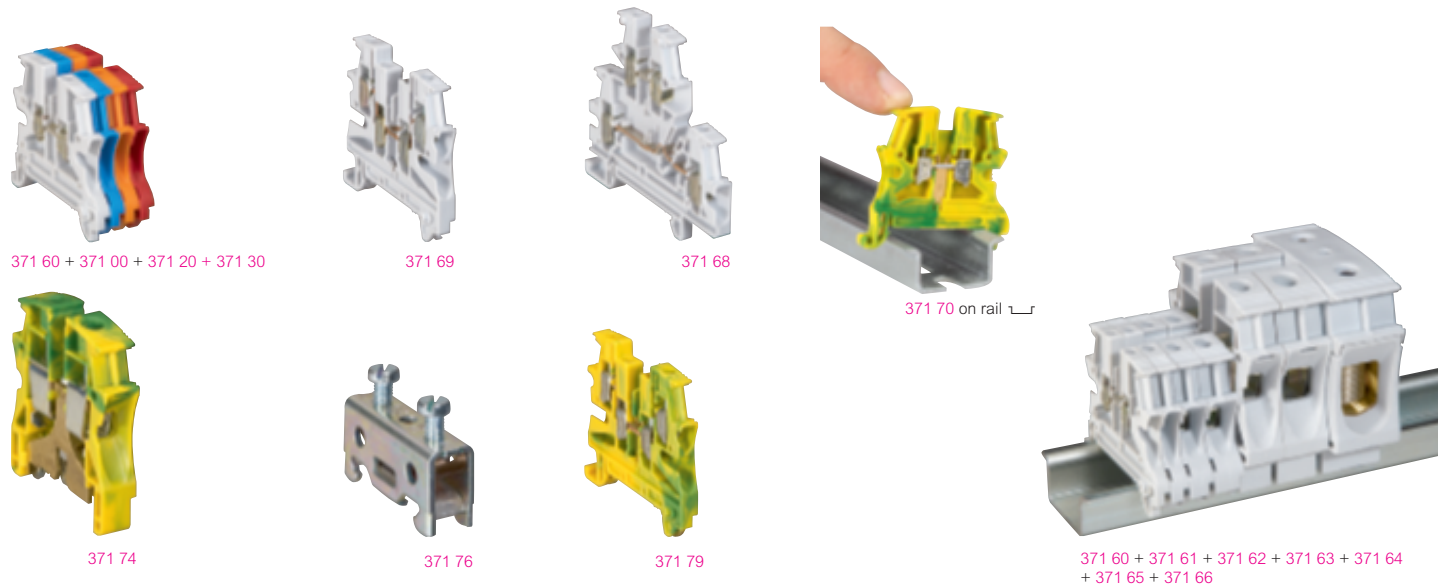
10 pitch high end stop

10 pitch end stop, bar su





terminal blocks with screw connection Viking™ 3 **NEW**

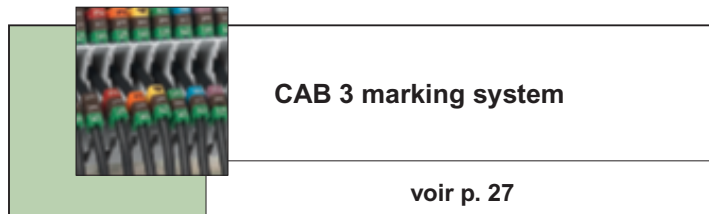


Technical characteristics (p. 20)

Used to make the electrical connection between 2 rigid or flexible copper wires
 2 areas for bridging combs for alternating equipotential connection up to 8 pitch
 For rails depth 15 mm, EN 60715 depth 7.5 mm and 15 mm

Pack	Cat.Nos	Connecting	⊕			
		Grey for standard circuit, blue for neutral conductor, orange for circuit not broken by the master isolating device, red for special circuits (safety, protected, etc)				
		1 connection - 1 entry/1 outlet				
			Nominal cross-section (mm²)	Rigid wire (mm²)	Capacity Flexible wire (mm²)	Pitch (mm)
60	371 60	Grey	2.5	0.25 to 4	0.25 to 2.5	5
60	371 00	Blue				
60	371 20	Orange				
60	371 30	Red				
50	371 61	Grey				
50	371 01	Blue	4	0.25 to 6	0.25 to 4	6
50	371 21	Orange				
50	371 31	Red				
40	371 62	Grey	6	0.5 to 10	0.25 to 6	8
40	371 02	Blue				
30	371 63	Grey	10	1.5 to 16	2.5 to 10	10
30	371 03	Blue				
20	371 64	Grey	16	1.5 to 25	4 to 16	12
20	371 04	Blue				
20	371 65	Grey	35	2.5 to 50	4 to 35	15
20	371 05	Blue				
10	371 66 ⁽¹⁾	Grey	70	25 to 95	16 to 70	22
25	371 69	Grey	4	0.25 to 6	0.25 to 4	6
25	371 09	Blue				
60	371 67	Grey	2.5	0.25 to 4	0.25 to 2.5	5
60	371 07	Blue				
60	371 68	Grey	4	0.25 to 6	0.25 to 4	6
60	371 08	Blue				
50	371 51 ⁽²⁾	Grey	2.5	0.25 to 4	0.25 to 2.5	5

Pack	Cat.Nos	For protection conductor	⊕			
		1 connection - 1 entry/1 outlet - metal base				
		Screwless fixing on rail up to 10 mm pitch PEN from 10 mm²				
			Nominal cross-section (mm²)	Capacity		Pitch (mm)
		Colour	Rigid wire (mm²)	Flexible wire (mm²)		
60	371 70	Green/yellow	2.5	0.25 to 4	0.25 to 2.5	5
50	371 71	Green/yellow	4	0.25 to 6	0.25 to 4	6
40	371 72	Green/yellow	6	0.5 to 10	0.25 to 6	8
30	371 73	Green/yellow	10	1.5 to 16	2.5 to 10	10
10	371 74	Green/yellow	16	1.5 to 25	4 to 16	12
10	371 75	Green/yellow	35	2.5 to 50	4 to 35	15
10	371 76	-	35	2.5 to 50	4 to 35	15
		1 connection - 2 entries/2 outlets - metal base				
		Screwless fixing on rail				
50	371 79	Green/yellow	4	0.25 to 6	0.25 to 4	6
		1 connection - 1 entry/1 outlet - plastic base				
		Can be used for protection conductor inside class II equivalent assemblies				
50	371 77	Green	4	0.25 to 6	0.25 to 4	6
40	371 78	Green	6	0.5 to 10	0.25 to 6	8
		PNE - Phase/Neutral/Earth				
		3 connections on 3 levels - metal base				
		Green/yellow marking for the lower level Screwless fixing on rail				
50	371 52 ⁽²⁾	Colour	Nominal cross-section (mm²)	Rigid wire (mm²)	Capacity Flexible wire (mm²)	Pitch (mm)
		Grey	2.5	0.25 to 4	0.25 to 2.5	5

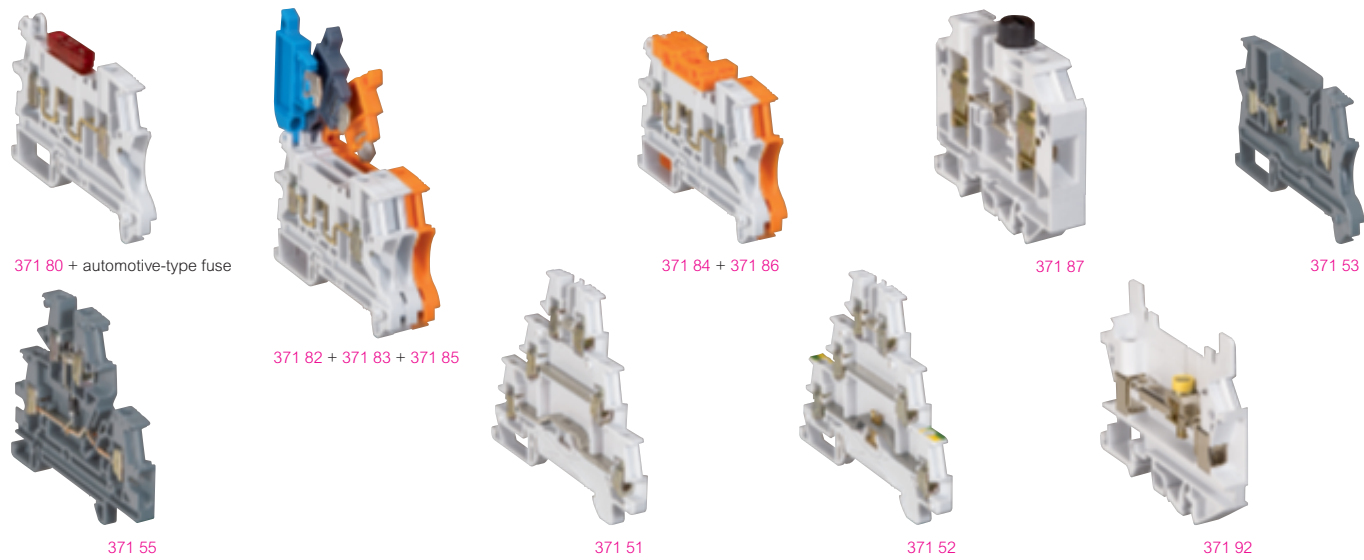


(1) Built-in end cap
 (2) Rigid wire capacity: 2.5 mm² max. with equipotential bridging comb

Red catalogue numbers: New products

BAT
 Date:
 Nom RMP:
 V. Desmons
 H. Bosselin
 Nom Chef de Pub:
 P. PERICLE
 Signature :

terminal blocks with screw connection Viking™ 3 (continued) **NEW**



371 80 + automotive-type fuse

371 84 + 371 86

371 87

371 53

371 82 + 371 83 + 371 85

371 55

371 51

371 52

371 92

Technical characteristics (p. 20-21)

Used to make the electrical connection between 2 rigid or flexible copper wires
2 areas for bridging combs for alternating equipotential connection up to 8 pitch
For rails \perp depth 15 mm, \perp EN 60715 depth 7.5 mm and 15 mm

metal - metal base

10 mm pitch

Capacity	Flexible wire (mm ²)	Pitch (mm)
4	0.25 to 2.5	5
6	0.25 to 4	6
8	0.25 to 6	8
10	2.5 to 10	10
12	4 to 16	12
15	4 to 35	15

metal base

4 to 35	15
---------	----

outlets -

6 0.25 to 4	6
---------------	---

metal - plastic base

6 0.25 to 4	6
8 0.25 to 6	8

ch

metal base

lower level	
-------------	--

Capacity	Flexible wire (mm ²)	Pitch (mm)
4	0.25 to 2.5	5

Pack	Cat.Nos	Disconnect terminal blocks 1 connection
20	371 80	Disconnection by means of blade type lever, handle lever or mini lever (with tool) Open (to be equipped) Can take a blade-type automotive fuse or a miniature circuit-breaker, or blade type levers Cat.Nos 375 15/16/17/18
20	371 81	For fuse cartridge 5 x 20 with handle lever Grey 2.5 0.25 to 2.5 0.25 to 2.5 6
20	371 82	For neutral circuit with blue handle lever Grey/blue 2.5 0.25 to 2.5 0.25 to 2.5 6
20	371 83	For standard circuit with handle lever Grey 2.5 0.25 to 2.5 0.25 to 2.5 6
20	371 84	For standard circuit with mini lever Grey 2.5 0.25 to 2.5 0.25 to 2.5 6
20	371 85	For circuit not broken with handle lever Circuit not broken by the master isolating device Orange 2.5 0.25 to 2.5 0.25 to 2.5 6
20	371 86	For circuit not broken with mini lever Circuit not broken by the master isolating device Orange 2.5 0.25 to 2.5 0.25 to 2.5 6
20	371 87	For cartridge 5 x 20 with screwed plug Grey 10 0.25 to 16 0.25 to 10 12
20	371 88	For cartridge 6.3 x 32 with screwed plug Grey 10 0.25 to 16 0.25 to 10 12

Blade type levers, joining rods and blown fuse indicators (p. 19)

New Starfix crimping tools

voir p. 30

Red catalogue numbers: New products

Pack	Cat.Nos	Function blocks
20	371 53	1 connection - modular Component connected with screws Colour Grey Nominal cross-section (mm ²) 2.5 Rigid wire (mm ²) 0.25 to 4 Capacity Flexible wire (mm ²) 0.25 to 2.5 Pitch (mm) 5
20	371 54	1 connection - diode carrier Grey 2.5 0.25 to 4 0.25 to 2.5 5
60	371 55	2 connections on 2 levels - diode carrier Grey 4 0.25 to 6 0.25 to 4 6
60	371 56	2 connections on 2 levels - with LED Voltage presence indicator (12/24V _~ et \surd) Grey 4 0.25 to 6 0.25 to 4 6
50	371 51 ⁽¹⁾	For sensors and actuators For connecting sensors (Cat.No 371 51) or actuators (Cat.No 371 52), and their shared power supply unit using equipotential bridging comb Cat.Nos 375 46/47 (wiring principe p. 21)
50	371 52 ⁽¹⁾	3 connections on 3 levels - for sensor Colour Grey Nominal cross-section (mm ²) 2.5 Rigid wire (mm ²) 0.25 to 4 Capacity Flexible wire (mm ²) 0.25 to 2.5 Pitch (mm) 5
50	371 52 ⁽¹⁾	3 connections on 3 levels - for actuator Green/yellow marking for the lower level Metal base. Screwless fixing on rail Grey 2.5 0.25 to 4 0.25 to 2.5 5
25	371 92	Disconnect for measurement 1 connection With its accessories, allows intervention (measurements, maintenance, etc) on a current, voltage and power measuring circuit by keeping the current transformer secondary circuit closed Colour Grey Nominal cross-section (mm ²) 4 Rigid wire (mm ²) 0.25 to 4 Capacity Flexible wire (mm ²) 0.25 to 4 Pitch (mm) 8

Accessories (p. 18)

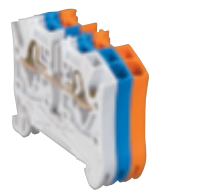
End stops (p. 18)

(1) Rigid wire capacity: 2.5 mm² max with equipotential bridging comb

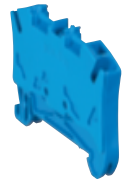
Date: **BAT**
Nom RMP:
V. Desmons
H. Bosselin
Nom Chef de Pub:
P. PERICLE
Signature :



terminal blocks with spring connection Viking™ 3 **NEW**



372 60 + 372 00 + 372 20



372 01



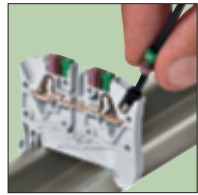
372 21



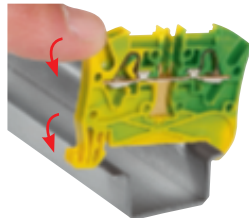
372 63



372 40



Automatic insertion of flexible wire with ferrule cap or rigid wire up to pitch of 6 mm



372 70 Automatic fixing on rail



372 72



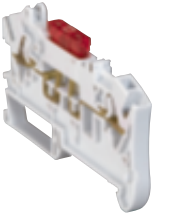
372 79



Technical characteristics (p. 22)

Screwless connection system, stainless steel spring type
Used to make the electrical connection between 2 rigid copper wires, or flexible copper wires with or without ferrules (p. 30)
Direct tool-free insertion of a rigid wire or flexible wire with ferrule, up to 6 mm pitch
2 areas for bridging combs for alternating equipotential connection
For rails depth 15 mm, EN 60715 depth 7.5 mm and 15 mm

terminal blo



372 80 with automotive-type fus



372 84

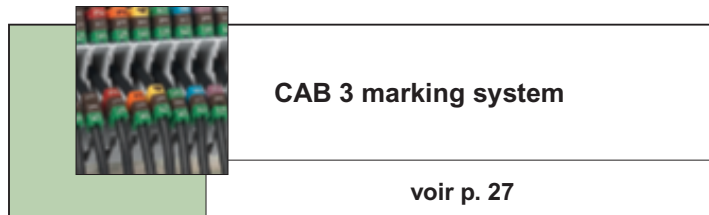


Technical charact

Screwless connection s
Used to make the elect
Direct tool-free insertio
2 areas for bridging cor
For rails depth 15 m

Pack	Cat.Nos	Connecting	Ex				
		Grey for standard circuit, blue for neutral conductor, orange for circuit not broken by the master isolating device					
		1 connection - 2 wires - 1 entry/1 outlet					
			Nominal cross-section (mm²)	Rigid wire (mm²)	Capacity Flexible wire (mm²)	Capacity Flexible wire with ferrule (mm²)	Pitch (mm)
60	372 60	Grey	4	0.5 to 6	0.5 to 4	0.5 to 2.5	5
60	372 00	Blue	4	0.5 to 6	0.5 to 4	0.5 to 2.5	5
60	372 20	Orange	4	0.5 to 6	0.5 to 4	0.5 to 2.5	5
50	372 61 ⁽¹⁾	Grey	4	0.5 to 6	0.5 to 4	0.5 to 4	6
50	372 01 ⁽¹⁾	Blue	4	0.5 to 6	0.5 to 4	0.5 to 4	6
50	372 21 ⁽¹⁾	Orange	4	0.5 to 6	0.5 to 4	0.5 to 4	6
50	372 62 ⁽¹⁾	Grey	6	0.5 to 6	0.5 to 6	0.5 to 6	8
50	372 02 ⁽¹⁾	Blue	6	0.5 to 6	0.5 to 6	0.5 to 6	8
40	372 63 ⁽¹⁾	Grey	10	0.75 to 10	0.75 to 10	0.75 to 10	10
40	372 03 ⁽¹⁾	Blue	10	0.75 to 10	0.75 to 10	0.75 to 10	10
10	372 64 ⁽¹⁾	Grey	16	4 to 16	4 to 16	4 to 16	12
10	372 04 ⁽¹⁾	Blue	16	4 to 16	4 to 16	4 to 16	12
		1 connection - 3 wires - 1 entry/2 outlets					
60	372 40	Grey	4	0.5 to 6	0.5 to 4	0.5 to 2.5	5
60	372 41	Blue	4	0.5 to 6	0.5 to 4	0.5 to 2.5	5
60	372 42	Orange	4	0.5 to 6	0.5 to 4	0.5 to 2.5	5
50	372 43 ⁽¹⁾	Grey	4	0.5 to 6	0.5 to 4	0.5 to 4	6
50	372 44 ⁽¹⁾	Blue	4	0.5 to 6	0.5 to 4	0.5 to 4	6
		1 connection - 4 wires - 2 entries/2 outlets					
60	372 46	Grey	4	0.5 to 6	0.5 to 4	0.5 to 2.5	5
60	372 47	Blue	4	0.5 to 6	0.5 to 4	0.5 to 2.5	5
50	372 69 ⁽¹⁾	Grey	4	0.5 to 6	0.5 to 4	0.5 to 4	6
50	372 09 ⁽¹⁾	Blue	4	0.5 to 6	0.5 to 4	0.5 to 4	6
		2 connections - 4 wires - 2 levels					
60	372 67	Grey	4	0.5 to 6	0.5 to 4	0.5 to 2.5	5
60	372 07	Blue	4	0.5 to 6	0.5 to 4	0.5 to 2.5	5
50	372 68 ⁽¹⁾	Grey	4	0.5 to 6	0.5 to 4	0.5 to 4	6
50	372 08 ⁽¹⁾	Blue	4	0.5 to 6	0.5 to 4	0.5 to 4	6

Pack	Cat.Nos	For protection conductor	Ex				
		Metal base Screwless fixing on rail PEN from 10 mm²					
		1 connection - 2 wires - 1 entry/1 outlet					
			Nominal cross-section (mm²)	Rigid wire (mm²)	Capacity Flexible wire (mm²)	Capacity Flexible wire with ferrule (mm²)	Pitch (mm)
60	372 70	Green/yellow	4	0.5 to 6	0.5 to 4	0.5 to 2.5	5
50	372 71 ⁽¹⁾	Green/yellow	4	0.5 to 6	0.5 to 4	0.5 to 4	6
25	372 72 ⁽¹⁾	Green/yellow	6	0.5 to 6	0.5 to 6	0.5 to 6	8
20	372 73 ⁽¹⁾	Green/yellow	10	0.75 to 10	0.75 to 10	0.75 to 10	10
15	372 74 ⁽¹⁾	Green/yellow	16	4 to 16	4 to 16	4 to 16	12
		1 connection - 3 wires - 1 entry/2 outlets					
40	372 10	Green/yellow	4	0.5 to 6	0.5 to 4	0.5 to 2.5	5
30	372 11 ⁽¹⁾	Green/yellow	4	0.5 to 6	0.5 to 4	0.5 to 4	6
		1 connection - 4 wires - 2 entries/2 outlets					
40	372 12	Green/yellow	4	0.5 to 6	0.5 to 4	0.5 to 2.5	5
30	372 79 ⁽¹⁾	Green/yellow	4	0.5 to 6	0.5 to 4	0.5 to 4	6

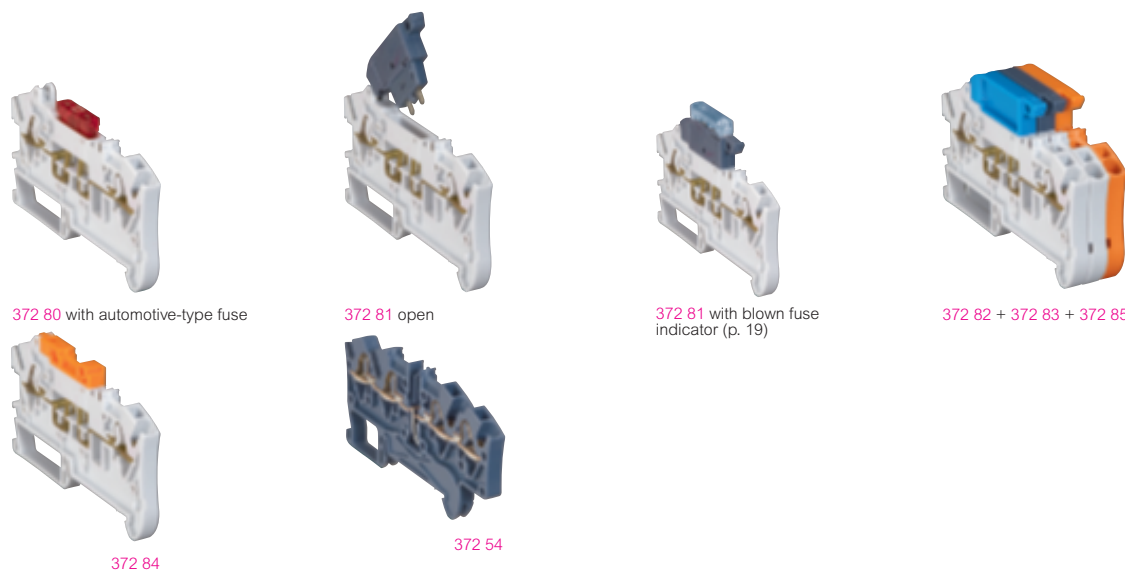


(1) Built-in end cap

Red catalogue numbers: New products

BAT
Date:
Nom RMP:
V. Desmons
H. Bosselin
Nom Chef de Pub:
P. PERICLE
Signature :

terminal blocks with spring connection Viking™ 3 (continued) **NEW**



Technical characteristics (p. 22)

Screwless connection system, stainless steel spring type
 Used to make the electrical connection between 2 rigid copper wires, or flexible copper wires with or without ferrules (p. 30)
 Direct tool-free insertion of a rigid wire or flexible wire with ferrule, up to 6 mm pitch
 2 areas for bridging combs for alternating equipotential connection
 For rails \perp depth 15 mm, \perp EN 60715 depth 7.5 mm and 15 mm

Capacity	Flexible wire with ferrule (mm ²)	Pitch (mm)
0.5 to 4	0.5 to 2.5	5
0.5 to 4	0.5 to 4	6
0.5 to 6	0.5 to 6	8
0.75 to 10	0.75 to 10	10
4 to 16	4 to 16	12

Capacity	Flexible wire with ferrule (mm ²)	Pitch (mm)
0.5 to 4	0.5 to 2.5	5
0.5 to 4	0.5 to 4	6

Capacity	Flexible wire with ferrule (mm ²)	Pitch (mm)
0.5 to 4	0.5 to 2.5	5
0.5 to 4	0.5 to 4	6

Pack	Cat.Nos	Disconnect terminal blocks 1 connection - 2 wires
		Disconnection by means of blade type lever, handle lever or mini lever (with tool) Open (to be equipped) Can take a blade-type automotive fuse or a miniature circuit-breaker, or blade type levers Cat.Nos 375 15/16/17/18
20	372 80	For fuse cartridge 5 x 20 with handle lever Grey 2.5 0.5 to 2.5 0.5 to 2.5 0.5 to 2.5 6
20	372 81	For neutral circuit with blue handle lever Grey/blue 2.5 0.5 to 2.5 0.5 to 2.5 0.5 to 2.5 6
20	372 82	For standard circuit with handle lever Grey 2.5 0.5 to 2.5 0.5 to 2.5 0.5 to 2.5 6
20	372 83	For standard circuit with mini lever Grey 2.5 0.5 to 2.5 0.5 to 2.5 0.5 to 2.5 6
20	372 84	For circuit not broken with handle lever Circuit not broken by the master isolating device Orange 2.5 0.5 to 2.5 0.5 to 2.5 0.5 to 2.5 6
20	372 85	For circuit not broken with mini lever Circuit not broken by the master isolating device Orange 2.5 0.5 to 2.5 0.5 to 2.5 0.5 to 2.5 6
20	372 86	

Pack	Cat.Nos	Function blocks
60	372 54	1 connection - 4 wires - 2 entries/2 outlets - diode carrier Colour Grey Nominal cross-section (mm ²) 4 Rigid wire (mm ²) 0.5 to 6 Capacity Flexible wire (mm ²) 0.5 to 4 Flexible wire with ferrule (mm ²) 0.5 to 2.5 Pitch (mm) 5
60	372 55	2 connections - 4 wires - 2 levels - diode carrier Grey 4 0.5 to 6 0.5 to 4 0.5 to 2.5 5
60	372 56	2 connections - 4 wires - 2 levels - with LED Voltage presence indicator (12/24V _~ et ~) Grey 4 0.5 to 6 0.5 to 4 0.5 to 2.5 5

Accessories (p. 18)

End stops (p. 18)

Blade type levers, joining rods and blown fuse indicators (p. 19)

system
27

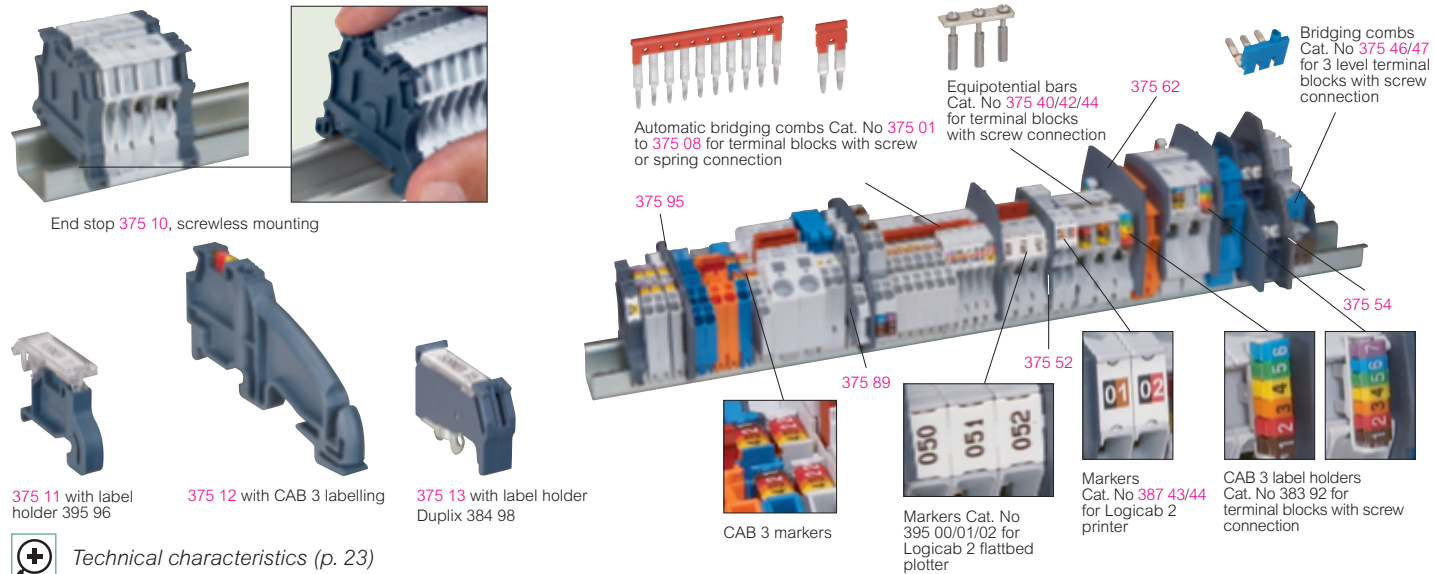


Red catalogue numbers: New products

Date: BAT
 Nom RMP:
 V. Desmons
 H. Bosselin
 Nom Chef de Pub:
 P. PERICLE
 Signature :



accessories for terminal blocks Viking™ 3



Technical characteristics (p. 23)

Pack	Cat.Nos	Description
Rails for cutting to length		
10	374 04	Length 2 m
10	374 07	EN 60715 depth 7.5 mm
10	477 22	depth 15 mm
10	477 23	depth 7.5 mm with oblong holes
10	394 49	45° mounting bracket Set of 2 supports for tilting a rail at an angle of 45° Supplied with 4 x M6 screws, nuts and washers
End stops		
50	375 10	Accept CAB 3 markers Automatic 6 mm pitch Screwless mounting For rails depth 15 mm and EN 60715 depth 7.5 mm and 15 mm Accepts label holder Cat.No 395 96 Acts as end cap for screw terminal blocks 1 entry/1 outlet 5, 6, 8 and 10 mm pitch
20	375 11	8 mm pitch For rails depth 15 mm and EN 60715 depth 7.5 mm and 15 mm Accepts label holder Cat.No 395 96
10	375 12	10 mm pitch For rails depth 15 mm and EN 60715 depth 7.5 mm (except for rail fixed on plate) and 15 mm For supporting protection or shielding bar: - Brass bar Cat.Nos 373 00/01 - Copper bar 12 x 4 mm with clamps Cat.No 373 02 - IP 2X terminal block with flat steel bar 12 x 2 mm Cat.No 048 19 - Copper bar 12 x 4 mm Cat.No 373 49 or 373 89 - Shielding bar 10 x 3 mm Cat.No 375 34
20	375 13	12 mm pitch For rails EN 60715, depth 15 mm and EN 60715 depth 7.5 mm and 15 mm After cutting out the upper divider, can be labelled using Duplix label holder Cat.No 384 98
Identification accessories		
20	395 96	Transparent label holder with variable angle Fixing on end stops Cat.Nos 375 10/11 Supplied with label 32 x 9.5 mm Can take label Cat.No 395 97
20	395 97	Label for engraving 28 x 9.5 mm For label holder Cat. No 395 96. Flexible ABS
10	395 98	White background, black engraving Black felt tip pen for permanent marking

Pack	Cat.Nos	Description
End caps		
100	375 50	Grey
20	375 51	For screw terminal blocks 1 entry/1 outlet 5, 6, 8 and 10 mm pitch
20	375 52	1 entry/1 outlet 12 and 15 mm pitch
20	375 53	2 entries/2 outlets
20	375 54	2 levels
20	375 55	3 levels
20	375 56	Disconnect type 6 mm pitch and function blocks 5 mm pitch
20	375 57	Disconnect type fuse cartridge 5 x 20 and 6.3 x 32 with screwed plug
10	375 57	Disconnect for measurement
For spring terminal blocks with 5 mm pitch		
50	375 86	Allows the block to become 6 mm pitch and take a flexible wire fitted with a ferrule 4 mm ²
50	375 87	1 entry/1 outlet
20	375 88	1 entry/2 outlets
20	375 89	2 entries/2 outlets
20	375 89	2 levels
For spring terminal blocks with 6 mm pitch		
20	375 90	Disconnect type
Separation and insulation dividers		
Grey		
For screw terminal blocks		
20	375 60	1 entry/1 outlet 5, 6, 8 and 10 mm pitch
10	375 61	1 entry/1 outlet 12 and 15 mm pitch
10	375 62	2 entries/2 outlets and disconnect type
10	375 63	6 mm pitch
20	375 64	2 levels
20	375 64	3 levels
For spring terminal blocks		
10	375 95	1 entry/1 outlet, 1 entry/2 outlets and 2 entries/2 outlets 5 and 6 mm pitch
10	375 96	2 levels
Equipotential bridging accessories		
Bridging combs for screw and spring terminal blocks		
Front mounting (automatic insertion), screwless Isolated and separable. Consecutive or alternating connection. Red		
20	375 01 ⁽¹⁾	For 10 blocks with 5 mm pitch
50	375 02 ⁽¹⁾	For 2 blocks with 5 mm pitch
20	375 04 ⁽²⁾	For 10 blocks with 6 mm pitch
50	375 05 ⁽²⁾	For 2 blocks with 6 mm pitch
20	375 07 ⁽³⁾	For 3 blocks with 8 mm pitch
20	375 08 ⁽³⁾	For 2 blocks with 8 mm pitch

(1) Blocks Cat. Nos 371 51/52: upper level only
Block Cat.No 372 56: lower level only
(2) Block Cat.No 371 56: lower level only
(3) Except for Cat.No 371 92

Red catalogue numbers: New products

accessories for



371 80 + 375 15 + 375 25

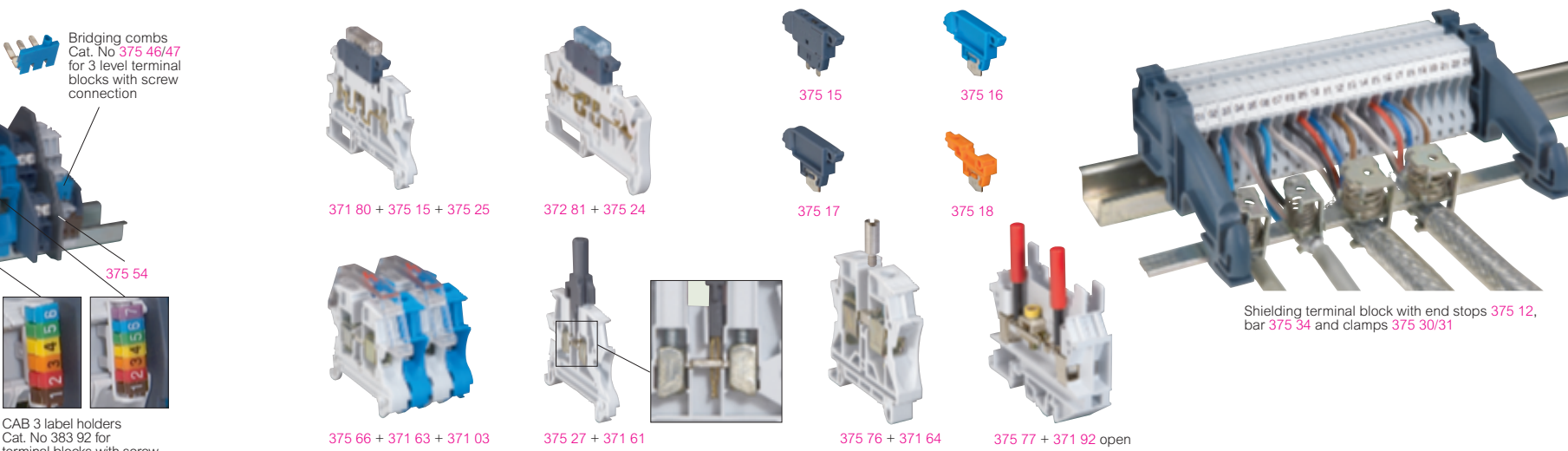
375 66 + 371 63 + 371 03

Technical characteristics

Emb.	Réf.	Description
10	375 40	Bar
10	375 42 ⁽¹⁾	For
10	375 44	For
10	375 46	Bri
10	375 47	For
10	375 46	Bro
10	375 47	Blu
20	375 82	Bri
20	375 85	For
10/50	375 15	Ac
10/50	375 16	Blu
10/50	375 17	Gre
10/50	375 18	Mir
20	375 21	Jo
20	375 22	For
10/50	375 24	Bl
10/50	375 25	Clip
10	375 30	12/
10	375 31	fus
4	375 32	110
		5 x
		Sh
		Ens
		Shi
		For
		- m
		10
		- m
		- m
		For
		For
		For

Date: BAT
Nom RMP: V. Desmons
H. Bosselin
Nom Chef de Pub: P. PERICLÉ
Signature :

accessories for terminal blocks Viking™ 3 (continued)



Technical characteristics (p. 22)

Emb.	Réf.	Equipotential bridging accessories (continued)	Emb.	Réf.	Shielding accessories (continued)
10	375 40	Bars for screw terminal blocks Front mounting with screws. Pre-assembled, bar Consecutive or alternating connection For 12 blocks with 10 mm pitch For 12 blocks with 12 mm pitch For 12 blocks with 15 mm pitch	10	375 34	Shielding bar Ensure safe, simple connection of cable shielding For screw and spring terminal blocks. Steel. Length 1 m. For use with end stops Cat.No 375 12 10 x 3 mm
10	375 42 ⁽¹⁾		50	375 35	
10	375 44		Bridging combs for 3-level screw terminal blocks For lower and intermediate levels of blocks Cat.Nos 371 51/52. Side mounting Isolated and separable Brown. For 12 blocks with 5 mm pitch Blue. For 12 blocks with 5 mm pitch	10	375 65
10	375 46	Bridging combs for spring terminal blocks Front mounting (automatic insertion), screwless Isolated. Red	10	375 66	
10	375 47	For 2 blocks with 10 mm pitch For 2 blocks with 12 mm pitch	10	375 67	
20	375 82	Accessories for disconnect blocks For screw and spring terminal blocks Blade type levers For open blocks Cat. Nos 371 80 and 372 80 Manual disconnection for handle type, tool required for mini lever type With handle lever for fuse cartridge 5 x 20 Blue handle lever for neutral Grey handle lever Mini lever	10	375 68	Protective screens 1 pole For screw terminal blocks 1 entry/1 outlet 5 and 6 mm pitch 8 and 10 mm pitch 12 and 15 mm pitch
20	375 85		10	375 69	
20	375 85		Joining rods For handle and mini lever For 2 blocks For 3 blocks	10	375 27 ⁽²⁾
10/50	375 15	Blown fuse indicators Clip directly onto blocks Cat.Nos 371 81, 372 81 or handle lever 375 15 (with power off)	50	375 75	
10/50	375 16	12/24/48 V _~ and ~ for block with fuse cartridge 5 x 20 with handle lever	20	375 76	Measurement accessories For screw and spring terminal blocks Measurement socket for Ø4 mm plug for blocks with 5 and 6 mm pitch For screw terminal blocks Measurement socket for Ø2 mm plug for blocks with 10 mm pitch Cat.Nos 371 03/63 Measurement socket for Ø4 mm plug for blocks with 12 and 15 mm pitch Cat.Nos 371 04/05/64/65 Measurement socket for Ø4 mm plug for disconnect block for measurement Cat.No 371 92
10/50	375 17	110/250 V _~ for block with fuse cartridge 5 x 20 with handle lever	10	375 77	
10/50	375 18		1/10	394 45	IP 2X safety tip adaptor Ø2 mm test plug - Retractable tube For performing ad-hoc tests in accordance with regulations on the protection of workers Fixes directly on the Ø4 mm plug
20	375 21	Shielding accessories Ensure safe, simple connection of cable shielding Shielding clamps For screw and spring terminal blocks - mounted by pivoting on collector bar 10 x 3 mm Cat.No 375 34 - mounted on plate with M4 screws (supplied) - mounted on rail with Cat.No 364 69	10	375 30	Measurement accessories Measurement socket for Ø4 mm plug for blocks with 5 and 6 mm pitch For screw terminal blocks Measurement socket for Ø2 mm plug for blocks with 10 mm pitch Cat.Nos 371 03/63 Measurement socket for Ø4 mm plug for blocks with 12 and 15 mm pitch Cat.Nos 371 04/05/64/65 Measurement socket for Ø4 mm plug for disconnect block for measurement Cat.No 371 92
20	375 22		10	375 31	
10	375 24		10	375 32	
10	375 25		4	375 32	

Bold pack quantities: Minimum quantities to be ordered
Red catalogue numbers: New products

(1) Except for Cat.No 371 87
(2) Except for disconnect blocks with handle lever, screw terminal block with LED and spring function blocks. 2 and 3-level terminal blocks: upper level only

Date: BAT
Nom RMP:
V. Desmons
H. Bosselin
Nom Chef de Pub:
P. PERICLE
Signature :

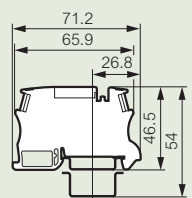
Nominal cross-section		
mm ²	CSA (AWG)	UL (AWG)
12	12	12
10	10	10
8	8	8
6	6	6
4	4	4
2	2	2
-	-	-
10	10	10
8	8	8
10	10	10

Function blocks

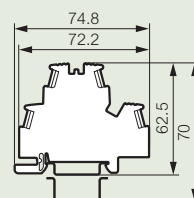
Cat.Nos	Voltage (V)			Current (A)			Nominal cross-section		
	IEC	CSA	UL	IEC	CSA	UL	IEC (mm ²)	CSA (AWG)	UL (AWG)
371 53	250	-	-	-	-	-	2.5	-	-
371 54	250	-	-	1	-	-	2.5	-	-
371 55	500	300	300	1	1	1	4	10	10
371 56	12 to 24	12 to 24	12 to 24	32	30	30	4	10	10

IEC 60947-7-1, CSA no. 22-2 no. 158, UL 1059

Cat.Nos 371 53/54

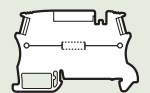


Cat.Nos 371 55/56

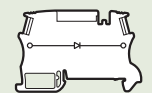


Schematic diagrams

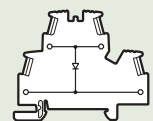
Cat.No 371 53



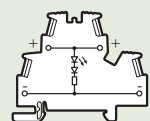
Cat.No 371 54



Cat.No 371 55



Cat.No 371 56



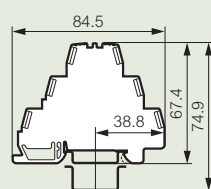
Diode for Cat.Nos 371 54/55
 - 1N4007 type 1A
 - direct current = 1 A
 - peak inverse voltage 1000 V
 - inverse current 5 µA at 25°C

Blocks for sensors and actuators/PNE

Cat.Nos	Voltage (V)			Current (A)			Nominal cross-section			
	IEC	CSA	UL	I _e	IEC	CSA	UL	IEC (mm ²)	CSA (AWG)	UL (AWG)
371 51	400	300	300	27	24	20	20	2.5	12	12
371 52										

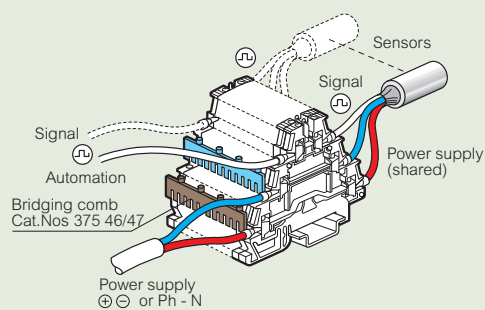
IEC 60947-7-1/7-2, CSA no. 22-2 no. 158, UL 1059
 I_e: Rated current NF C 15100 table 52H, column 4

Cat.Nos 371 51/52

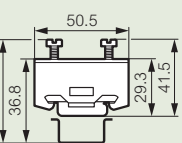


Wiring principle

Block for sensor Cat.No 371 51



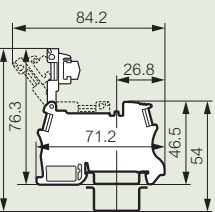
Cat.No 371 76



Nominal cross-section		
IEC (mm ²)	CSA (AWG)	UL (AWG)
2.5	12	12
10		

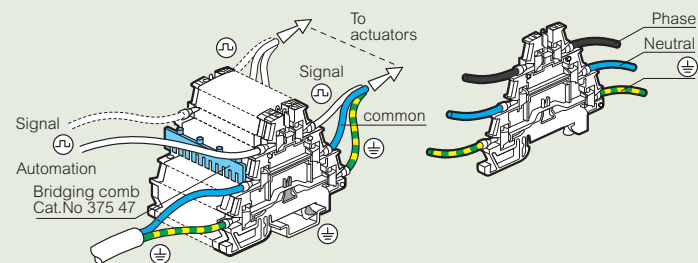
Short-circuit + overload	
Disassemble blocks	Assembled blocks
I _{sc} = 6.3 A	-
P = 1.65 W	-
I _{sc} = 1.6 W	-
P = 1.8 W	-

Cat.Nos 371 84/86



Block for actuator Cat.No 371 52

PNE block Cat.No 371 52

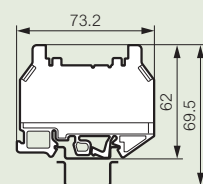


Disconnect block for measurement

Cat.Nos	Voltage (V)			Current (A)			Nominal cross-section		
	IEC	CSA	UL	IEC	CSA	UL	IEC (mm ²)	CSA (AWG)	UL (AWG)
371 92	800	-	-	24	-	-	4	-	-

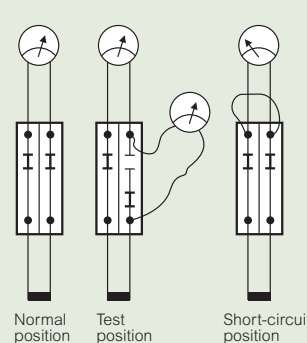
IEC EN 60947-7-1

Cat.No 371 92

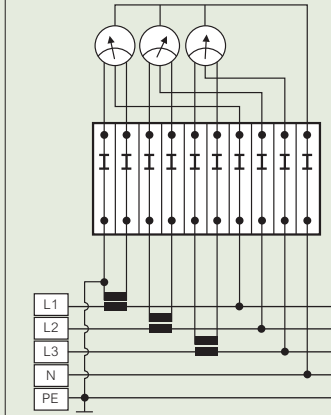


Wiring principle for measurement blocks Cat.No 371 92

Ammeter circuit



Wattmeter circuit



Per circuit:
 2 x Disconnect blocks for measurement Cat.No 371 92
 4 x Measurement sockets for Ø4 mm plug Cat.No 375 77
 1 x End cap Cat.No 375 57
 1 x Shunt with Ø4 mm plugs

10 x Disconnect blocks for measurement Cat.No 371 92
 12 x Measurement sockets for Ø4 mm plug Cat.No 375 77
 1 x End cap Cat.No 375 57
 3 x Shunts with Ø4 mm plugs

Stripped lengths (mm)

Screw terminal pitch (mm)	Rigid or flexible wire
5	6 to 8
6	
8	10 to 12
10	
12	13 to 17
15	14 to 18
22	15 to 22

Protection against fire and panic risks in public buildings/UTE C 12-201 guide

Art. EL 3, definitions: "Security installations are those that have to be put into or maintained in service to ensure the evacuation of the public or facilitate the intervention of the first-aid"

Art. EL 16, power supply circuits in security installations section 1a: "...the corresponding junction or deviation devices and their enclosures, except for the waterproofing systems, must satisfy the incandescent wire test defined in the standard in force, the temperature of the incandescent wire being 960 °C"
 Viking 3 terminal blocks satisfy the incandescent wire test 960 °C according to standard IEC 60695-2-11

Date: **BAT**
 Nom RMP:
V. Desmons
H. Bosselin
 Nom Chef de Pub:
P. PERICLE
 Signature :

accessories for terminal blocks Viking™ 3

Stripped lengths (mm)

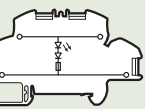
Spring terminal pitch (mm)	Rigid or flexible wire
5	
6	8 to 12
8	
10	8 to 13
12	8 to 15

Protection against fire and panic risks in public buildings/UTE C 12-201 guide

Art. EL 3, definitions: "Security installations are those that have to be put into or maintained in service to ensure the evacuation of the public or facilitate the intervention of the first-aid"

Art. EL 16, power supply circuits in security installations section 1a: "...the corresponding junction or deviation devices and their enclosures, except for the waterproofing systems, must satisfy the incandescent wire test defined in the standard in force, the temperature of the incandescent wire being 960 °C"
Viking 3 terminal blocks satisfy the incandescent wire test 960 °C according to standard IEC 60695-2-11

Cat.No 372 56



Ex e/i/tD/iD II

certified by this certificate
terminal blocks for protection

terminal blocks: 500 V
2 entries - 2 outlets: 500 V
terminal blocks: 250 V

customer is available

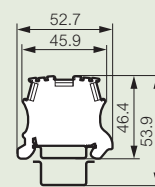
Nominal cross-section		
IEC (mm²)	CSA (AWG)	UL (AWG)
2.5	14	14

Short-circuit + overload	
Assembled blocks	Assembled blocks
W / 6.3 A	-
W / 1.65 W	-

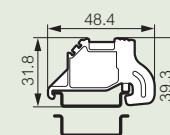
Characteristics and dimensions (mm)

End stops

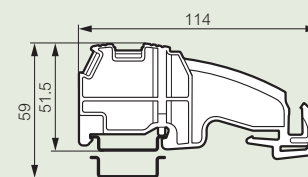
Cat.No 375 10



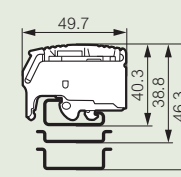
Cat.No 375 11



Cat.No 375 12



Cat.No 375 13



End caps

Cat.Nos	Thickness (mm)
375 50	2
375 51	2.5
375 52	2
375 53	2
375 54	2.5
375 55	2
375 56	1.4
375 57	1.4
375 86	1
375 87	1.1
375 88	1.1
375 89	1.1
375 90	2

Separation and insulation dividers

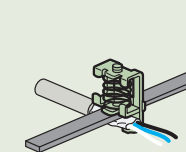
Cat.Nos	Thickness (mm)
375 54	2.5
375 60	2.5
375 61	2.6
375 62	2.5
375 63	2.5
375 95	2.8
375 96	2.7

Equipotential bridging combs/bars

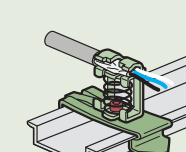
Cat.Nos	Cross-section (mm²)
375 01	2.5
375 02	2.5
375 04	4
375 05	4
375 07	6
375 08	6
375 40	10
375 42	16
375 44	35
375 46	2.5
375 47	2.5
375 82	10
375 85	16

Shielding clamps

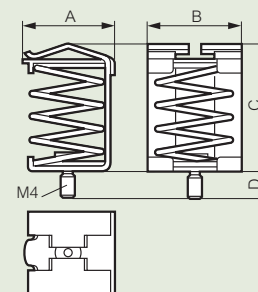
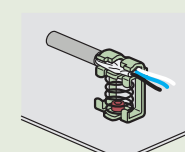
Mounting on bar
10 x 3 Cat.No 375 34



Mounting on rail
with accessory
Cat.No 364 69



Mounting on plate

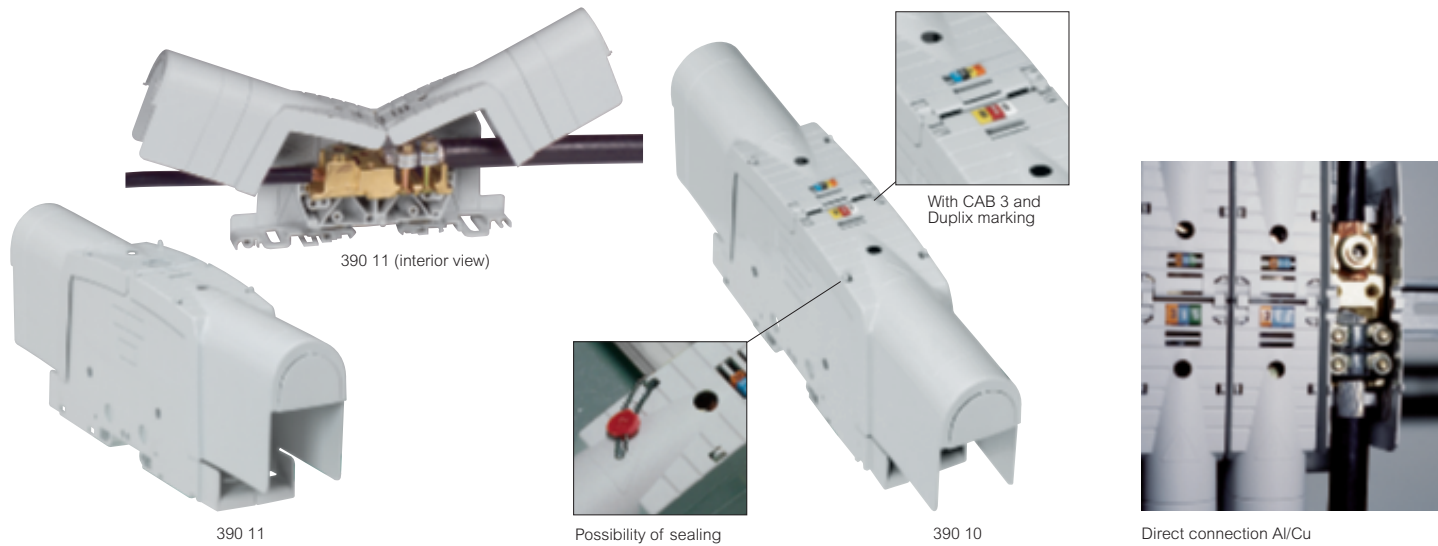


Cat.Nos	A	B	C	D
375 30	13.5	18	26	5.6
375 31	20	20.3	31.4	5.3
375 32	24.8	26	40	5.3

Date: **BAT**
Nom RMP:
V. Desmons
H. Bosselin
Nom Chef de Pub:
P. PERICLE
Signature :



Viking™ 3 power terminal blocks



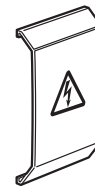
Pack	Cat.Nos	For copper and aluminium cables
		Bridging the gap between the enclosure and external cables Fixed using metal clip for rails 15 mm depth and EN 60715 15 mm depth, or on plate with screws Fitted with covers with cut-outs Permits the use of Cab 3, Duplix markers Test via test plug Ø4 closed covers Blocks with identical pitch can be joined using a threaded rod Supports shunt with Cat.Nos 394 46/47
		Cable/cable Rigid or flexible connecting cable (mm ²) Rigid or flexible connecting cable (mm ²) Pitch (mm)
5	390 10	Al/Cu 35 to 120 Cu 35 to 70 42
5	390 11	Al/Cu 70 to 300 Cu 70 to 150 55
		Cable lug/cable lug Connecting plate max. (mm ²) Connecting plate max. (mm ²) Pitch (mm)
5	390 13	Al/Cu 95 Al/Cu 95 36
5	390 14	Al/Cu 150 Al/Cu 150 42
5	390 15	Al/Cu 300 Al/Cu 300 55
		Cable lug/cable Connecting plate max. (mm ²) Rigid or flexible connecting cable (mm ²) Pitch (mm)
5	390 17	Al/Cu 150 Cu 35 to 95 42
5	390 18	Al/Cu 300 Cu 70 to 150 55
		Cable/cable lug Rigid or flexible connecting cable (mm ²) Connecting plate max. (mm ²) Pitch (mm)
5	390 20	Cu 35 to 120 Al/Cu 120 42
5	390 21	Al 35 to 120 Al/Cu 70 42
		Cu 70 to 300 Al/Cu 300 55

Pack	Cat.Nos	Accessories for power terminal blocks for copper and aluminium cables
		Shunt For blocks with pitch 36 and 42 mm
5	394 46	
5	394 47	For blocks with pitch 55 mm

Pack	Cat.Nos	For bars or lugs
		Bridging the gap between the enclosure and external cables With cable lug. Plastic foot For use with terminal marker sheets
		For symmetrical rails Fixed using metal clip on rails 15 mm depth and EN 60715 15 mm depth
		Connecting max. (mm ²) Width of plate (mm) Screw Ø Pitch (mm)
5	390 71	35 15 M 8 26
5	390 72	70 20 M 10 34
5	390 73	120 25 M 10 34
5	390 74	240 35 M 12 46
		For asymmetrical rails Fixed using metal clip on rails EN 60715
5	390 31	35 15 M 8 26
5	390 32	70 20 M 10 34
5	390 33	120 25 M 10 34
5	390 34	240 35 M 12 46

Pack	Cat.Nos	Accessories for plate power terminal blocks
		Separation barriers Take protective covers Marking possible with CAB 3 For blocks with pitch 26 mm
10	394 77	
10	394 78	For blocks with pitch 34 and 46 mm
		Protective covers For mounting on separation barriers For 3 blocks with pitch 46 mm or for 4 blocks with pitch 34 mm
5	394 86	
5	394 88	For 4 blocks with pitch 26 mm
5	394 89	For 4 blocks with pitch 46 mm

End stops (p. 19)



Viking™ 3 po

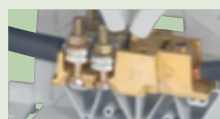
Characteristics of aluminium cables

IK 04
Conform to IEC EN 60947-1
UL 1059 and 486 E - C
Fire resistant IEC EN 60947-1
V2 according to UL 94
Insulation voltage Ui: 1
Impulse voltage Uimp: 1
Insulating material:
- polyamide body - 30
- polypropylene cover

Connection table

Cat.Nos	Connection (mm ²)	V
Cable - Cable		
390 10	Rigid or flexible Cu/Al: 35 to 120	
390 11	Rigid or flexible Cu/Al: 70 to 300	
Cable lug - Cable lug		
390 13	Cu/Al: max. 95	
390 14	Cu/Al: max. 150	
390 15	Cu/Al: max. 300	
Cable lug - Cable		
390 17	Cu/Al: max. 150	
390 18	Cu/Al: max. 300	
Cable - Cable lug		
390 20	Rigid or flexible Cu: 35 to 120 Al: 35 to 120	
390 21	Rigid or flexible Cu: 70 to 300 Al: 70 to 300	

Cable - cable



Terminal for cable lug



Currents table

Cat.Nos	Current	
	Shunted input IEC	IEC
Cable - Cable		
390 10	340	250
390 11	570	400
Cable lug - Cable lug		
390 13	310	310
390 14	415	415
390 15	670	670
Cable lug - Cable		
390 17	415	315
390 18	670	420
Cable - Cable lug		
390 20	340	340
390 21	570	570
Shunts		
394 46	450 max.	
394 47	700 max.	

Red catalogue numbers: New products

BAT
Date :
Marketing France :
C. Pipia
Nom RMP :
O. Pinel
H. Bosselin
Nom chef de Pub :
C. Brissaud
Signature :

Viking™ 3 power terminal blocks

■ Characteristics of power terminal blocks for copper and aluminium cables

IK 04
 Conform to IEC EN 60947-7-1
 UL 1059 and 486 E - CSA 22-2
 Fire resistant IEC EN 60695-2-11: 960°C (except cover)
 V2 according to UL 94
 Insulation voltage U_i : 1000 V
 Impulse voltage U_{imp} : 12 kV
 Insulating material:
 - polyamide body - 30°C to + 100 °C
 - polypropylene cover -25 °C to + 100 °C

Connection table

Cat.Nos	Connection (mm ²)	Width of plate (mm)	Screw \varnothing	Connection (mm ²)	Width of plate (mm)	Screw \varnothing
Cable - Cable						
390 10	Rigid or flexible Cu/Al: 35 to 120			Rigid or flexible Cu: 35 to 70		
390 11	Rigid or flexible Cu/Al: 70 to 300			Rigid or flexible Cu: 70 to 150		
Cable lug - Cable lug						
390 13	Cu/Al: max. 95	28	M 8	Cu/Al: max. 95	28	M 8
390 14	Cu/Al: max. 150	34	M 10	Cu/Al: max. 150	34	M 10
390 15	Cu/Al: max. 300	46	M 12	Cu/Al: max. 300	46	M 12
Cable lug - Cable						
390 17	Cu/Al: max. 150	34	M 10	Rigid or flexible Cu: 35 to 95		
390 18	Cu/Al: max. 300	46	M 12	Rigid or flexible Cu: 70 to 150		
Cable - Cable lug						
390 20	Rigid or flexible Cu: 35 to 120 Al: 35 to 120			Cu/Al: max. 120 Cu/Al: max. 70	34	M 10
390 21	Rigid or flexible Cu: 70 to 300 Al: 70 to 300			Cu/Al: max. 300 Cu/Al: max. 150	46	M 12

Cable - cable



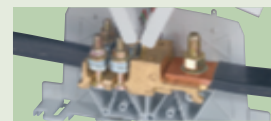
Terminal for cable lug - terminal for cable lug



Terminal for cable lug - cable



Cable - terminal for cable lug



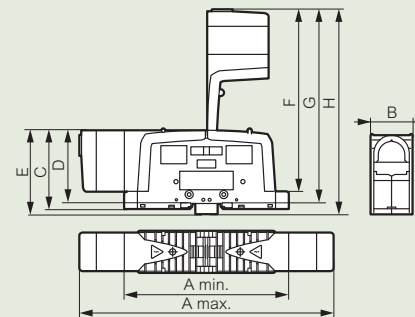
Currents table

Cat.Nos	Current (A)				Short-circuit current (kA)		Tightening torque (Nm)	
	Shunted input		I/O currents		Shunted input	I/O	Site	Factory
	IEC	IEC	CSA	UL				
Cable - Cable								
390 10	340	250	200	175	14.4	8.4	15	15
390 11	570	400	300	285	36	18	35	35
Cable lug - Cable lug								
390 13	310	310	250	230	11.4	11.4	15	15
390 14	415	415	340	285	18	18	15	15
390 15	670	670	520	420	36	36	35	35
Cable lug - Cable								
390 17	415	315	210	230	18	11.4	15	15
390 18	670	420	325	285	36	18	35	35
Cable - Cable lug								
390 20	340	340	235	255	14.4	8.4	15	15
390 21	570	570	375	420	36	18	35	35
Shunts								
394 46	450 max.							6
394 47	700 max.							10

Cable section equivalence table

mm ²	35	70	95	120	150	185	300
AWG	2	00	0000	250	300	350	600

Dimensions (mm)

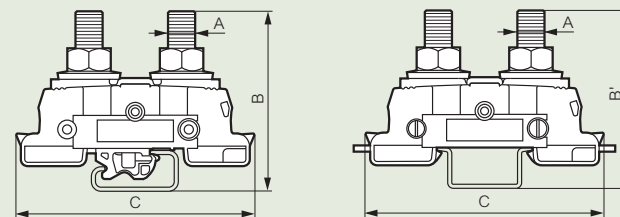


Cat.Nos	A max.	A min.	B	C	D	E	F	G	H
390 13	227	155	36	82	73	88	176	185	191
390 10/14/17/20	296	200	42	83.5	74.5	89.5	212	221	227
390 11/15/18/21	337	216	55	107.3	98.5	113.5	257	266	272

■ Characteristics of bars or lugs power terminal blocks

Cat.Nos	Voltage (V) IEC	Intensity (A) IEC	IEC EN 60947-7-1 Fire resistance: 960°C, IEC EN 60695-2-11 V2 according to UL 94 Insulating material: polyamide - 30 °C to + 100 °C
390 31/71	1000	125	
390 32/72	1000	192	
390 33/73	1000	269	
390 34/74	1000	415	

Dimensions (mm)



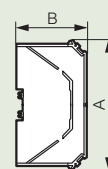
Cat.Nos 390 31/32/33/34

Cat.Nos 390 71/72/73/74

Cat.Nos	A	B	B'	C
390 31	M 8	56		84
390 32	M 10	61		84
390 33	M 10	61		84
390 34	M 12	64		86
390 71	M 8		55.3	84
390 72	M 10		60.4	84
390 73	M 10		60.4	84
390 74	M 12		63.5	86

■ Separation barriers

Dimensions (mm)

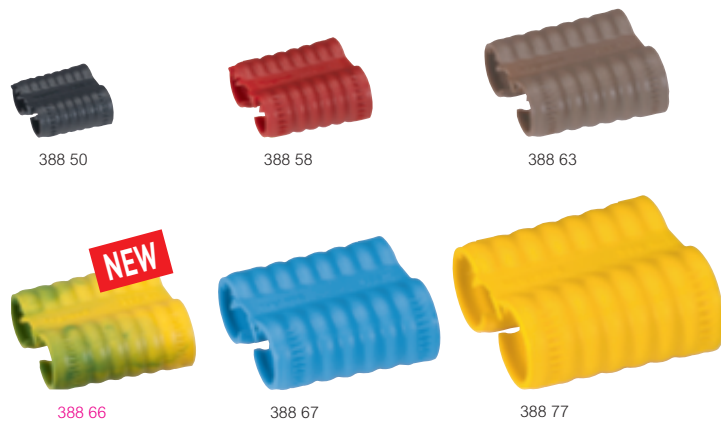


Cat.Nos 394 77/78

Cat.Nos	A	B	Th.
394 77	106	82	8
394 78	188	102	12

BAT
 Date :
 Marketing France :
 C. Pipia
 Nom RMP :
 O. Colange
 P. Leneutre
 Nom chef de Pub :
 C. Brissaud
 Signature :

CAB 3™ marking and isolating sleeves



For colour-marking cables and isolating lug tubes from 10 mm² to 300 mm²
Fitting and removal without tool before or after connection

Pack	Cat.Nos	Sleeves
		Conductor Ø7.1 to 10.5 mm
		Cross-section 10 to 25 mm ²⁽¹⁾
		Colour Length (mm)
100	388 49	blue 20
100	388 50	black 20
100	388 51	brown 20
100	388 52	red 20
100	388 53	yellow 20
100	388 54	yellow/green 20
		Conductor Ø10 to 13.5 mm
		Cross-section 25 to 50 mm ²⁽¹⁾
		Colour Length (mm)
50	388 55	blue 29.5
50	388 56	black 29.5
50	388 57	brown 29.5
50	388 58	red 29.5
50	388 59	yellow 29.5
50	388 60	yellow/green 29.5
		Conductor Ø13 to 17 mm
		Cross-section 50 to 95 mm ²⁽¹⁾
		Colour Length (mm)
25	388 61	blue 38
25	388 62	black 38
25	388 63	brown 38
25	388 64	red 38
25	388 65	yellow 38
25	388 66	yellow/green 38
		Conductor Ø16.5 to 23 mm
		Cross-section 95 to 185 mm ²⁽¹⁾
		Colour Length (mm)
20	388 67	blue 46
20	388 68	black 46
20	388 69	brown 46
20	388 70	red 46
20	388 71	yellow 46
20	388 72	yellow/green 46
		Conductor Ø22.5 to 29 mm
		Cross-section 185 to 300 mm ²⁽¹⁾
		Colour Length (mm)
10	388 73	blue 55
10	388 74	black 55
10	388 75	brown 55
10	388 76	red 55
10	388 77	yellow 55
10	388 78	yellow/green 55

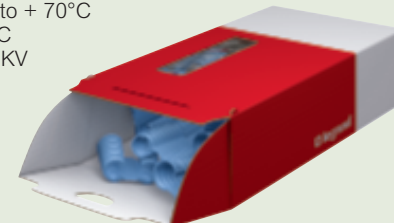
(1) The values for cable cross section are just an example, the real values are depending on lugs and cable type

Red catalogue numbers: New products

CAB 3™ marking and isolating sleeves

■ **Characteristics**

Material PA 6.6
Installation temperature: - 5°C to + 40°C
Operating temperature: - 25°C to + 105°C
Storage temperature: - 40°C to + 70°C
Incandescent wire test: 960°C
Dielectric cross resistance: 6KV



Supplied in dispenser box

■ **Dimensions (mm)**

Cat.No	A	ØB	ØC
388 49 to 54	20.2	8.87	10.9
388 55 to 60	29.4	11.57	14.5
388 61 to 66	37.9	14.97	18.4
388 67 to 72	46.1	19.07	23.3
388 73 to 78	55.14	25.51	30.7

■ **Installation**



■ **Example of use**



Example of use of sleeve
Cat.No 388 61 on a power terminal block

Use of a sleeve on a wired DPX 250

CAB 3™ marking system for wiring and Viking 3 terminal blocks

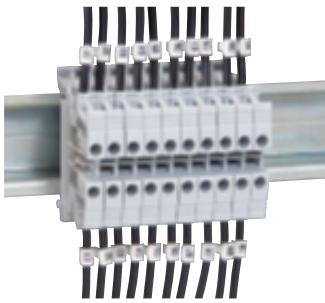
marking label sheets for Viking 3 terminal blocks



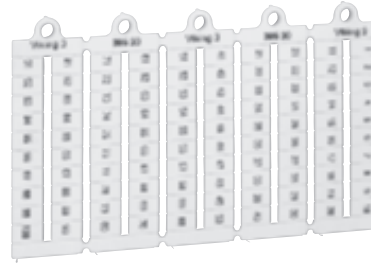
381 51



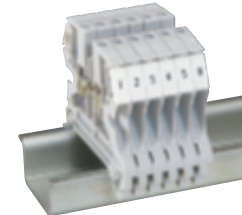
381 64



Same markers for cable and terminal blocks



395 20



395 05 on Viking 3 terminal blocks



395 98

Strips of 20 markers
For marking wiring or Viking 3 terminal blocks

Pack	Cat.Nos	Markers for wiring 0.5 to 1.5 mm ² cross-section and terminal blocks
240	381 50	Numbers: black on white background (available in black on yellow background on request) 01 to 20
240	381 51	21 to 40
240	381 52	41 to 60
240	381 53	61 to 80
240	381 54	81 to 100
240	381 55	Blank



381 51

Pack	Cat.Nos	Markers for wiring 1.5 to 2.5 mm ² cross-section and terminal blocks
240	381 60	Numbers: black on white background (available in black on yellow background on request) 01 to 20
240	381 61	21 to 40
240	381 62	41 to 60
240	381 63	61 to 80
240	381 64	81 to 100
240	381 65	Blank



381 64

Pack	Cat.Nos	Blank markers
1000	395 00	Displayed by sheet of 100 pre-cut markers Manual marking or via Logicab 2
1000	395 01	For blocks 5 mm pitch
1000	395 02	For blocks 6 mm pitch
		For blocks 8 mm pitch

Numbers Reading of installed marker

Horizontal format		
Pitch of 5 mm		
1000	395 05	From 1 to 10 (10 times)
1000	395 06	From 11 to 20 (10 times)
1000	395 07	From 21 to 30 (10 times)
1000	395 08	From 31 to 40 (10 times)
1000	395 09	From 1 to 50 (2 times)
1000	395 10	From 1 to 100
1000	395 11	From 101 to 200
Pitch of 6 mm		
1000	395 15	From 1 to 10 (10 times)
1000	395 16	From 11 to 20 (10 times)
1000	395 17	From 21 to 30 (10 times)
1000	395 18	From 31 to 40 (10 times)
1000	395 19	From 1 to 50 (2 times)
1000	395 20	From 1 to 100
1000	395 21	From 101 to 200

Pack	Cat.Nos	Black felt tip pen
10	395 98	Indelible for marking

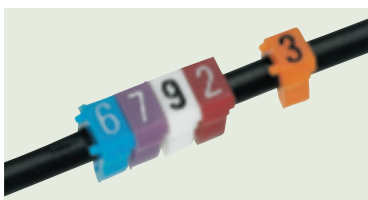
Cat.No	A	ØB	ØC
19 to 54	20.2	8.87	10.9
55 to 60	29.4	11.57	14.5
61 to 66	37.9	14.97	18.4
67 to 72	46.1	19.07	23.3
73 to 78	55.14	25.51	30.7



red DPX 250

CAB 3™ marking system

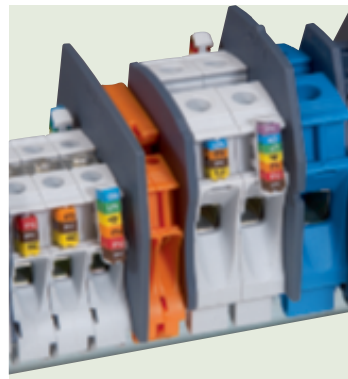
markers for wiring and Viking 3 terminal blocks



Perfect alignment of label holders



382 12



Terminal block with CAB 3 markers and label-holders

accessories



384 90

384 91



383 97

Pack	Cat.Nos	0.15 to 0.5 ²	0.5 to 1.5 ²	
		Markers for wiring 0.15 to 0.5 mm² and 0.5 to 1.5 mm² cross-section and terminal blocks On Viking 3 terminal blocks - 4 markers 0.15 to 0.5 mm ² max. - 3 markers 0.15 to 1.5 mm ² max. Pack: - Up to 0.5 mm ² : strips of 25 markers From 0.5 mm ² to 2.5 mm ² : strips of 30 markers - Upper 2.5 mm ² : strips of 20 markers Price per marker		
		Digits: international colour code		
1000	1200	381 00	382 10	0 Black
1000	1200	381 01	382 11	1 Brown
1000	1200	381 02	382 12	2 Red
1000	1200	381 03	382 13	3 Orange
1000	1200	381 04	382 14	4 Yellow
1000	1200	381 05	382 15	5 Green
1000	1200	381 06	382 16	6 Blue
1000	1200	381 07	382 17	7 Purple
1000	1200	381 08	382 18	8 Grey
1000	1200	381 09	382 19	9 White
		Letters : black on yellow background		
300	381 10	383 00		A
300	381 11	383 01		B
300	381 12	383 02		C
300	381 13	383 03		D
300	381 14	383 04		E
300	381 15	383 05		F
300	381 16	383 06		G
300	381 17	383 07		H
300	381 18	383 08		I
300	381 19	383 09		J
300	381 20	383 10		K
300	381 21	383 11		L
300	381 22	383 12		M
300	381 23	383 13		N
300	381 24	383 14		O
300	381 25	383 15		P
300	381 26	383 16		Q
300	381 27	383 17		R
300	381 28	383 18		S
300	381 29	383 19		T
300	381 30	383 20		U
300	381 31	383 21		V
300	381 32	383 22		W
300	381 33	383 23		X
300	381 34	383 24		Y
300	381 35	383 25		Z
		Conventional symbols : black on yellow background		
300	381 40	382 70		/
300	381 41	382 71		•
300	381 42	382 72		+
300	381 43	382 73		-
300	381 44	382 74		~
300	381 45	382 75		≡
300	381 46	382 76		⊥

381 06

383 17

381 28

382 72

381 43

Pack	Cat.Nos	1.5 to 2.5 ²	4 to 6 ²	
		Markers for wiring 1.5 to 2.5 mm² and 4 to 6 mm² cross-section Pack: - Up to 0.5 mm ² : strips of 25 markers From 0.5 mm ² to 2.5 mm ² : strips of 30 markers - Upper 2.5 mm ² : strips of 20 markers Price per marker		
		Digits: international colour code		
1200	800	382 20	382 30	0 Black
1200	800	382 21	382 31	1 Brown
1200	800	382 22	382 32	2 Red
1200	800	382 23	382 33	3 Orange
1200	800	382 24	382 34	4 Yellow
1200	800	382 25	382 35	5 Green
1200	800	382 26	382 36	6 Blue
1200	800	382 27	382 37	7 Purple
1200	800	382 28	382 38	8 Grey
1200	800	382 29	382 39	9 White
		Letters : black on yellow background		
300	383 30	383 60		A
300	383 31	383 61		B
300	383 32	383 62		C
300	383 33	383 63		D
300	383 34	383 64		E
300	383 35	383 65		F
300	383 36	383 66		G
300	383 37	383 67		H
300	383 38	383 68		I
300	383 39	383 69		J
300	383 40	383 70		K
300	383 41	383 71		L
300	383 42	383 72		M
300	383 43	383 73		N
300	383 44	383 74		O
300	383 45	383 75		P
300	383 46	383 76		Q
300	383 47	383 77		R
300	383 48	383 78		S
300	383 49	383 79		T
300	383 50	383 80		U
300	383 51	383 81		V
300	383 52	383 82		W
300	383 53	383 83		X
300	383 54	383 84		Y
300	383 55	383 85		Z
		Conventional symbols : black on yellow background		
300	382 80	382 90		/
300	382 81	382 91		•
300	382 82	382 92		+
300	382 83	382 93		-
300	382 84	382 94		~
300	382 85	382 95		≡
300	382 86	382 96		⊥

382 32

382 26

383 46

383 79

Pack	Cat.Nos	Accessories
100	384 90	Blacks
50	384 91	Blacks
50	384 92	Blacks
100	383 92	Supplies
10	383 94	Supplies
10	383 95	Supplies
10	383 96	Supplies
10	383 97	Supplies
1	382 01	Set of 10
1	382 02	Set of 10
1	382 03	Set of 10
1	382 04	Set of 10
1	382 00	Set of 10

accessories CAB 3™ marking system

CAB 3™ marking system for wiring and Viking 3 terminal blocks



g 1.5 to 2.5 mm²
cross-section

ps of 25 markers
mm²: strips of 30

ps of 20 markers

colour code



llow background



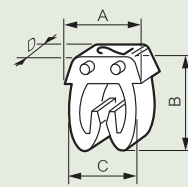
ols : black on yellow



Pack	Cat.Nos	Accessories CAB 3
		Marker-holders For cables cross-section from 10 mm ² to 70 mm ² Capacity: 8 digits, letters or symbols markers from 0.5 to 1.5 mm ² or 1.5 to 2.5 mm ² cross section Black, cross-section (mm ²) 10 to 16 25 to 35 50 to 70
100	384 90	10 to 16
50	384 91	25 to 35
50	384 92	50 to 70
100	383 92	Support for markers Can be clipped on Viking 3 terminal blocks Capacity: 7 markers from 0.15 to 0.5 mm ² 6 markers from 0.5 to 1.5 mm ²
		Transparent applicators For rapid selection and application of markers onto cable
		For markers cross-section (mm ²) Applicator colour for identification of cross-section
10	383 94	0.15 to 0.5 CAB 3
10	383 95	0.5 to 1.5 CAB 3
10	383 96	1.5 to 2.5 CAB 3
10	383 97	4 to 6 CAB 3
1	382 01	Set of markers 0.15 to 0.5 mm ² : 2 500 markers + 10 applicators (250 digits from 0 to 9)
1	382 02	0.5 to 1.5 mm ² : 3 000 markers + 10 applicators (300 digits from 0 to 9)
1	382 03	1.5 to 2.5 mm ² : 3 000 markers + 10 applicators (300 digits from 0 to 9)
1	382 04	4 to 6 mm ² : 2 000 markers + 10 applicators (200 digits from 0 to 9)
1	382 00	On-site toolbox With removable tray for CAB 3 markers and applicators, Starfix ferrules... Height 85 mm, depth 280 mm, width 450 mm Metal, padlockable

■ Dimensions

Markers
Polyamide 6/6



Dimensions	Cable cross-section (mm ²)			
	0.15 to 0.5	0.5 to 1.5	1.5 to 2.5	4 to 6
A (mm)	5	5	5.6	8
B (mm)	5.05	6.4	7.6	9.6
C (mm)	3.7	4.3	4.9	7.1
D (mm)	2.3	3	3	3
∅ min./max. (mm)	0.8/2.2	2.2/3	2.8/3.8	4.3/5.3

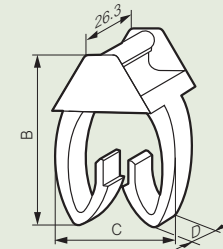
Cat.Nos 381 50 to 381 55 et 381 60 to 381 65: no liking stud.
D = 6 mm

Marker holders

Cat.No 384 90

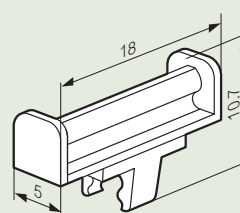
Cat.No 384 91

Cat.No 384 92

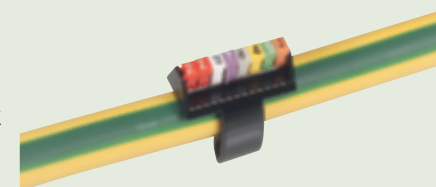


Dim.	Section of cable for marking (mm ²)		
	10 to 16	25 to 35	50 to 70
A (mm)	18	24.3	27.2
B (mm)	8.9	12.2	17.2
C (mm)	7	7	10

Support for markers Cat.No 383 92

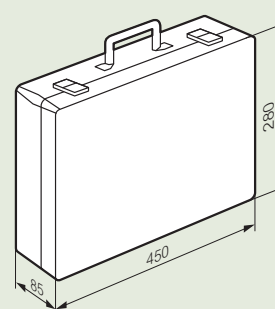


On cable with marker-holder Cat.No 384 92



■ Characteristics and dimensions of on-site toolbox

Cat.No 382 00



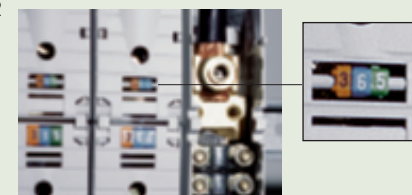
Bottom tray consists of:
• 8 medium slots
(each slot takes 1 box of CAB 3)
• 1 large slot

Top tray consists of:
• 12 small slots (<=> approx.
6 boxes of CAB 3)
• 1 medium slot for applicators
Capacity: approx. 15000 CAB 3 markers

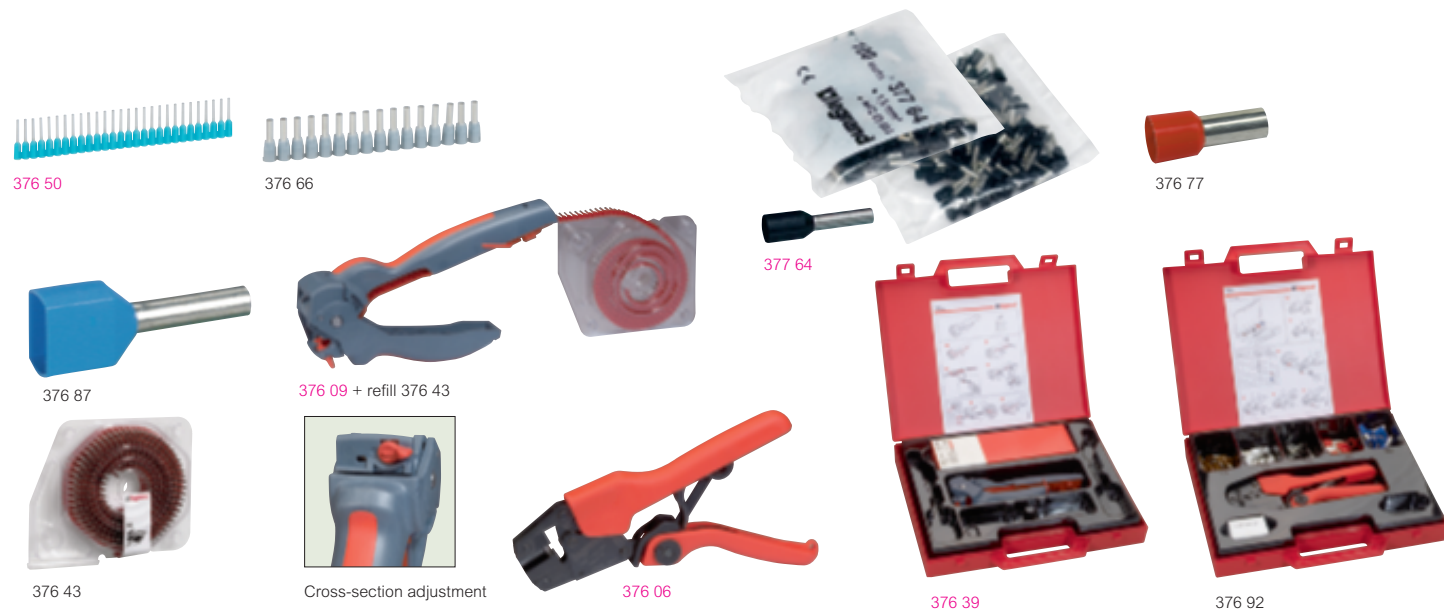
On terminal blocks,
with support Cat.No 383 92



On power terminal blocks



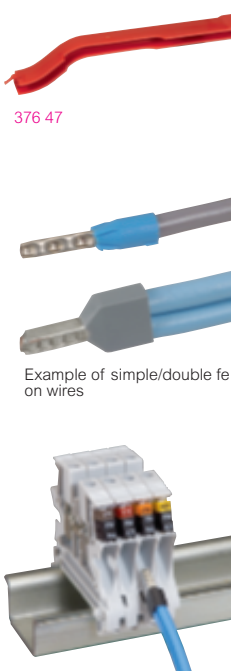
Starfix™ ferrules and crimping tools



Pack	Cat.Nos	Ferrules with insulating flange			
		Provide an equipotential link for all the strands of a flexible conductor Active part in tinned electrolytic copper Conform to NF C 63-023			
		Simples in strips			
		For-cables cross-section (mm ²)	Colour	Strips	Ferrules
500	376 50	0.25	turquoise	10	50
500	376 60	0.34	green	12	40
480	376 61	0.5	white	12	40
480	376 62	0.75	blue	12	40
1000	376 63	1	red	25	40
1000	376 64	1.5	black	25	40
1000	376 66	2.5	grey	25	40
250	376 67	4	orange	10	25
250	376 68	6	green	10	25
		Simples individuals (sachet packing)			
500	377 50	0.25	turquoise	5	100
500	377 60	0.34	green	5	100
1000	377 61	0.5	white	10	100
1000	377 62	0.75	blue	10	100
1000	377 63	1	red	10	100
1000	377 64	1.5	black	10	100
1000	377 66	2.5	grey	10	100
250	377 67	4	orange	5	50
250	377 68	6	green	5	50
		Simples individuals (box packing)			
100	376 69	10	brown		
100	376 72 ⁽¹⁾	16	white		
100	376 70	16	white		
50	376 71	25	black		
50	376 77	35	red		
30	376 78	50	blue		
		Doubles individuals			
100/500	376 87	2 x 0.75	blue		
100/500	376 88	2 x 1	red		
100/500	376 89	2 x 1.5	black		
100/500	376 90	2 x 2.5	grey		
		Large capacity Starfix refills			
		Large capacity for less frequent applicator reloading Translucent packaging For direct mounting on crimping tool Cat.No 376 09			
		Cross-section (mm ²)	Colour	Number of ferrules per strip	
3 000	376 41	0.5	White	300	
3 000	376 42	0.75	Blue	300	
3 000	376 43	1	Red	300	
3 000	376 44	1.5	Black	300	
2 500	376 45	2.5	Grey	250	

Pack	Cat.Nos	Crimping tools for ferrules in strips	
		Cut and carry out 4-point crimping of ferrules from 0.25 to 6 mm ² in one operation Use recommended for spring connections Dedicated applicator for each crimping tool for dispensing strips	
1	376 08	Starfix crimping tool for 0.25 and 0.34 mm² cross-sections Supplied fitted with empty applicator	
1	376 09	Starfix crimping tool for 0.5 to 2.5 mm² cross-sections Fitted with an adjustment wheel Supplied fitted with empty applicator	
1	376 39	Starfix S multi-purpose crimping tool for 0.5 to 2.5 mm² cross-sections Assorted kit, comprising: - 1 Starfix crimping tool, Cat. No. 376 09 fitted with empty applicator - 120 x 0.5 mm ² ferrules - 120 x 0.75 mm ² ferrules - 240 x 1 mm ² ferrules - 320 x 1.5 mm ² ferrules - 200 x 2.5 mm ² ferrules	
1	376 10	Starfix crimping tool for 4 and 6 mm² cross-sections Fitted with an adjustment wheel Supplied complete with empty applicator	
1	376 97	Starfix S multi-purpose crimping tool for 0.5 to 2.5 mm² cross-sections Tool cuts, strips, twists, crimps Supplied complete with 5 empty applicators For left and right-handed persons	
		Crimping tool for individual single and double ferrules	
1	376 06	Starfix crimping tool for 0.25 to 6 mm² cross-sections For 4-point crimping of ferrules from 0.25 to 6 mm ² Use recommended for spring connections Crimping tool with disengageable control system, crimping at end Right or left-handed	
1	376 92	Starfix clamp for 10 to 50 mm² cross-section Assorted kit: supplied comprising: - 1 tool with crimping operation control system for individual ferrules 10 to 50 mm ² - 30 individual ferrules 10 mm ² - 20 individual ferrules 16 mm ² - 15 individual ferrules 25 mm ² - 10 individual ferrules 35 mm ² - 10 individual ferrules 50 mm ²	

Starfix™ appl



Pack	Cat.No	Sta
10	376 46	For
10	376 47	For
10	376 48	For

(1) Short ferrule

Bold pack quantities: Minimum quantities to be ordered
Red catalogue numbers: New products

Starfix™ applicator

NEW



Pack	Cat.No	Starfix applicator	
		For Starfix crimping tool	
		For dispensing strips of ferrules in Starfix crimping tools Cat.Nos 376 08/09/10	
		For ferrules cross-section (mm²)	Colour
		0.25 et 0.34	yellow
		0.5 à 2.5	red
		4 et 6	orange

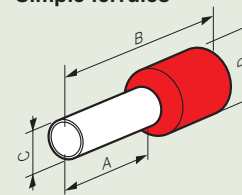
Starfix™ applicator

■ **Correspondence table**

Cross-section (mm²)	Ferrule		
	Simple ferrule	Large capacity ferrule - refills	Starfix applicator
0.5	376 61	376 41	376 47
0.75	376 62	376 42	376 47
1	376 63	376 43	376 47
1.5	376 64	376 44	376 47
2.5	376 66	376 45	376 47

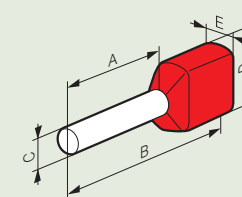
■ **Dimensions (mm)**

Simple ferrules



Cat.Nos			Cross-section (mm²)	A	B	C	D
376 50	377 50						
376 60	377 60		0.34	8	14.5	1.1	3
376 61	377 61	376 41	0.5	8	14.5	1.5	3.4
376 62	377 62	376 42	0.75	8	14.5	1.5	3.4
376 63	377 63	376 43	1	8	14.5	1.7	3.6
376 64	377 64	376 44	1.5	8	14.5	2	4.1
376 66	377 66	376 45	2.5	8	14.5	2.6	4.8
376 67	377 67		4	12	21	3.2	5.7
376 68	377 68		6	12	23	3.9	7.2
376 69			10	12	21	4.9	8.1
376 72			16	12	23	6.3	9.8
376 70			16	18	29	6.3	9.8
376 71			25	18	31	7.9	12
376 77			35	18	32	8.9	13.5
376 78			50	20	36	11.1	16.1

Double ferrules

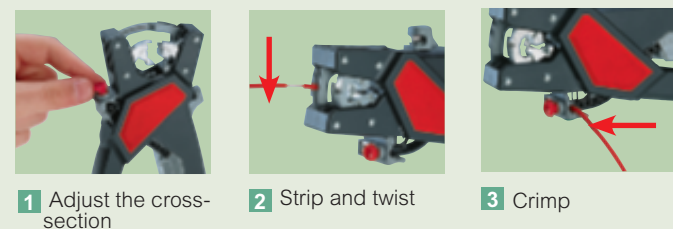


Cat.Nos	Cross-section (mm²)	A	B	C	D	E
376 87	2 x 0.75	8	15	2.1	6	3.3
376 88	2 x 1	8	15	2.35	6	4
376 89	2 x 1.5	8	16	2.6	7.2	4.2
376 90	2 x 2.5	10	18.5	3.3	8.4	4.8

■ **Example of use**
Starfix tool



Starfix S tool



Red catalogue numbers: New products

Catalogue number index

Cat.Nos	Page No.	Pack	Cat.Nos	Page No.	Pack	Cat.Nos	Page No.	Pack	Cat.Nos	Page No.	Pack	Cat.Nos	Page No.	Pack			
371 00			372 09	16	50	375 25	19	10/50	376 62	30	480	381 29	28	300	382 36	28	800
371 00	14	60	10	-	40	27	-	10	63	-	1000	30	-	300	37	-	800
01	-	50	11	-	30	30	-	10	64	-	1000	31	-	300	38	-	800
02	-	40	12	-	40	31	-	10	66	-	1000	32	-	300	39	-	800
03	-	30	20	-	60	32	-	4	67	-	250	33	-	300	70	-	300
04	-	20	21	-	50	34	-	10	68	-	250	34	-	300	71	-	300
05	-	20	40	-	60	35	-	50	69	-	100	35	-	300	72	-	300
07	-	60	41	-	60	40	-	10	70	-	100	40	-	300	73	-	300
08	-	60	42	-	60	42	-	10	71	-	50	41	-	300	74	-	300
09	-	25	43	-	50	44	-	10	72	-	100	42	-	300	75	-	300
20	-	60	44	-	50	46	-	10	77	-	50	43	-	300	76	-	300
21	-	50	46	-	60	47	-	10	78	-	30	44	-	300	80	-	300
30	-	60	47	-	60	50	18	100	87	-	100/500	45	-	300	81	-	300
31	-	50	54	17	60	51	-	20	88	-	100/500	46	-	300	82	-	300
51	-	50	55	-	60	52	-	20	89	-	100/500	50	27	240	83	-	300
52	-	50	56	-	60	53	-	20	90	-	100/500	51	-	240	84	-	300
53	15	20	60	16	60	54	-	20	92	-	1	52	-	240	85	-	300
54	-	20	61	-	50	55	-	20	97	-	1	53	-	240	86	-	300
55	-	60	62	-	50	56	-	20	377 00			54	-	240	90	-	300
56	-	60	63	-	40	57	-	10	377 50	30	500	55	-	240	91	-	300
60	14	60	64	-	10	60	-	20	60	-	500	60	-	240	92	-	300
61	-	50	67	-	60	61	-	10	61	-	480	61	-	240	93	-	300
62	-	40	68	-	50	62	-	10	62	-	480	62	-	240	94	-	300
63	-	30	69	-	50	63	-	10	63	-	1000	63	-	240	95	-	300
64	-	20	70	-	60	65	19	10	64	-	1000	64	-	240	96	-	300
65	-	20	71	-	50	66	-	10	66	-	1000	65	-	240	383 00		
66	-	10	72	-	25	67	-	10	67	-	250	382 00	29	1	383 00	28	300
67	-	60	73	-	20	68	-	10	68	-	250	01	-	1	01	-	300
68	-	60	74	-	15	69	-	10	381 00			02	-	1	02	-	300
69	-	25	79	-	30	75	-	50	381 00	28	1000	03	-	1	03	-	300
70	-	60	80	17	20	76	-	20	01	-	1000	04	-	1	04	-	300
71	-	50	81	-	20	77	-	10	02	-	1000	05	-	1	05	-	300
72	-	40	82	-	20	82	-	20	03	-	1000	10	28	1200	06	-	300
73	-	30	83	-	20	85	-	20	04	-	1000	11	-	1200	07	-	300
74	-	10	84	-	20	86	18	50	05	-	1000	12	-	1200	08	-	300
75	-	10	85	-	20	87	-	50	06	-	1000	13	-	1200	09	-	300
76	-	10	86	-	20	88	-	20	07	-	1000	14	-	1200	10	-	300
77	-	50	374 00			89	-	20	08	-	1000	15	-	1200	11	-	300
78	-	40	374 04	18	10	90	-	20	09	-	1000	16	-	1200	12	-	300
79	-	50	07	-	10	95	-	10	10	-	300	17	-	1200	13	-	300
80	15	20	375 00			96	-	10	11	-	300	18	-	1200	14	-	300
81	-	20	375 01	18	20	376 00			12	-	300	19	-	1200	15	-	300
82	-	20	02	-	50	376 06	30	1	13	-	300	20	-	1200	16	-	300
83	-	20	04	-	20	08	-	1	14	-	300	21	-	1200	17	-	300
84	-	20	05	-	50	09	-	1	15	-	300	22	-	1200	18	-	300
85	-	20	07	-	20	10	-	1	16	-	300	23	-	1200	19	-	300
86	-	20	08	-	20	39	-	1	17	-	300	24	-	1200	20	-	300
87	-	20	10	-	50	41	-	3000	18	-	300	25	-	1200	21	-	300
88	-	20	11	-	20	42	-	3000	19	-	300	26	-	1200	22	-	300
92	-	25	12	-	10	43	-	3000	20	-	300	27	-	1200	23	-	300
372 00			13	-	20	44	-	3000	21	-	300	28	-	1200	24	-	300
372 00	16	60	15	19	10/50	45	-	2500	22	-	300	29	-	1200	25	-	300
01	-	50	16	-	10/50	46	31	10	23	-	300	30	-	800	26	-	300
02	-	50	17	-	10/50	47	-	10	24	-	300	31	-	800	27	-	300
03	-	40	18	-	10/50	48	-	10	25	-	300	32	-	800	28	-	300
04	-	10	21	-	20	50	30	500	26	-	300	33	-	800	29	-	300
07	-	60	22	-	20	60	-	500	27	-	300	34	-	800	30	-	300
08	-	50	24	-	10/50	61	-	480	28	-	300	35	-	800	31	-	300

Bold pack quantities: Minimum quantities to be ordered
Red catalogue numbers: New products

Nos	Page No.	Pack
29	28	300
30	-	300
31	-	300
32	-	300
33	-	300
34	-	300
35	-	300
40	-	300
41	-	300
42	-	300
43	-	300
44	-	300
45	-	300
46	-	300
50	27	240
51	-	240
52	-	240
53	-	240
54	-	240
55	-	240
60	-	240
61	-	240
62	-	240
63	-	240
64	-	240
65	-	240
382 00		
00	29	1
01	-	1
02	-	1
03	-	1
04	-	1
10	28	1200
11	-	1200
12	-	1200
13	-	1200
14	-	1200
15	-	1200
16	-	1200
17	-	1200
18	-	1200
19	-	1200
20	-	1200
21	-	1200
22	-	1200
23	-	1200
24	-	1200
25	-	1200
26	-	1200
27	-	1200
28	-	1200
29	-	1200
30	-	800
31	-	800
32	-	800
33	-	800
34	-	800
35	-	800

Cat.Nos	Page No.	Pack
382 36	28	800
37	-	800
38	-	800
39	-	800
70	-	300
71	-	300
72	-	300
73	-	300
74	-	300
75	-	300
76	-	300
80	-	300
81	-	300
82	-	300
83	-	300
84	-	300
85	-	300
86	-	300
90	-	300
91	-	300
92	-	300
93	-	300
94	-	300
95	-	300
96	-	300
383 00		
383 00	28	300
01	-	300
02	-	300
03	-	300
04	-	300
05	-	300
06	-	300
07	-	300
08	-	300
09	-	300
10	-	300
11	-	300
12	-	300
13	-	300

Cat.Nos	Page No.	Pack
383 14	28	300
15	-	300
16	-	300
17	-	300
18	-	300
19	-	300
20	-	300
21	-	300
22	-	300
23	-	300
24	-	300
25	-	300
30	-	300
31	-	300
32	-	300
33	-	300
34	-	300
35	-	300
36	-	300
37	-	300
38	-	300
39	-	300
40	-	300
41	-	300
42	-	300
43	-	300
44	-	300
45	-	300
46	-	300
47	-	300
48	-	300
49	-	300
50	-	300
51	-	300
52	-	300
53	-	300
54	-	300
55	-	300
60	-	300
61	-	300

Cat.Nos	Page No.	Pack
383 62	28	300
63	-	300
64	-	300
65	-	300
66	-	300
67	-	300
68	-	300
69	-	300
70	-	300
71	-	300
72	-	300
73	-	300
74	-	300
75	-	300
76	-	300
77	-	300
78	-	300
79	-	300
80	-	300
81	-	300
82	-	300
83	-	300
84	-	300
85	-	300
92	29	100
94	-	10
95	-	10
96	-	10
97	-	10
384 00		
384 90	29	100
91	-	50
92	-	50
388 00		
388 49	26	100
50	-	100
51	-	100
52	-	100
53	-	100
54	-	100

Cat.Nos	Page No.	Pack
388 55	26	50
56	-	50
57	-	50
58	-	50
59	-	50
60	-	50
61	-	25
62	-	25
63	-	25
64	-	25
65	-	25
66	-	25
67	-	20
68	-	20
69	-	20
70	-	20
71	-	20
72	-	20
73	-	10
74	-	10
75	-	10
76	-	10
77	-	10
78	-	10
390 00		
390 10	24	5
11	-	5
13	-	5
14	-	5
15	-	5
17	-	5
18	-	5
20	-	5
21	-	5
31	-	5
32	-	5
33	-	5
34	-	5
71	-	5
72	-	5

Cat.Nos	Page No.	Pack
390 73	24	5
74	-	5
394 00		
394 45	19	1/10
46	24	5
47	-	5
49	18	10
77	24	10
78	-	10
86	-	5
88	-	5
89	-	5
395 00		
395 00	27	1000
01	-	1000
02	-	1000
05	-	1000
06	-	1000
07	-	1000
08	-	1000
09	-	1000
10	-	1000
11	-	1000
15	-	1000
16	-	1000
17	-	1000
18	-	1000
19	-	1000
20	-	1000
21	-	1000
96	18	20
97	-	20
98	18	10
477 00		
477 22	18	10
23	-	10

In accordance with its policy of continuous improvement, the Company reserves the right to change specifications and designs without notice. All illustrations, descriptions, dimensions and weights in this catalogue are for guidance and cannot be held binding on the Company.

Bold pack quantities: Minimum quantities to be ordered
Red catalogue numbers: New products

Ne
the
Screw

EX 29026

 **legrand**[®]

EMB Electrical Industries S.A.E.

Headquarter office
Pyramids Heights Office Park
KM 22 Cairo - Alex. desert road
Building 1B, 12556
Tel.: +202 3536 0000
Fax: +202 3536 0001
www.legrand.eg