

XL³-N 125 & 250

SIMPLY, EFFICIENT
AND SAFE

3 - PHASE DISTRIBUTION BOARDS UP TO 250 A



[--> CATALOGUE PAGES INSIDE](#)

THE **GLOBAL SPECIALIST**
IN ELECTRICAL AND DIGITAL BUILDING INFRASTRUCTURES

 **legrand**[®]

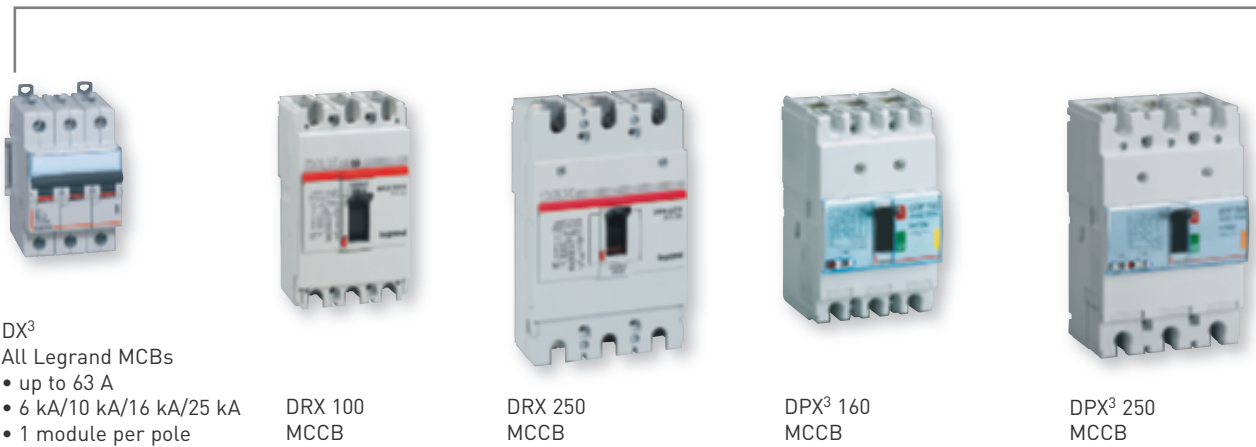
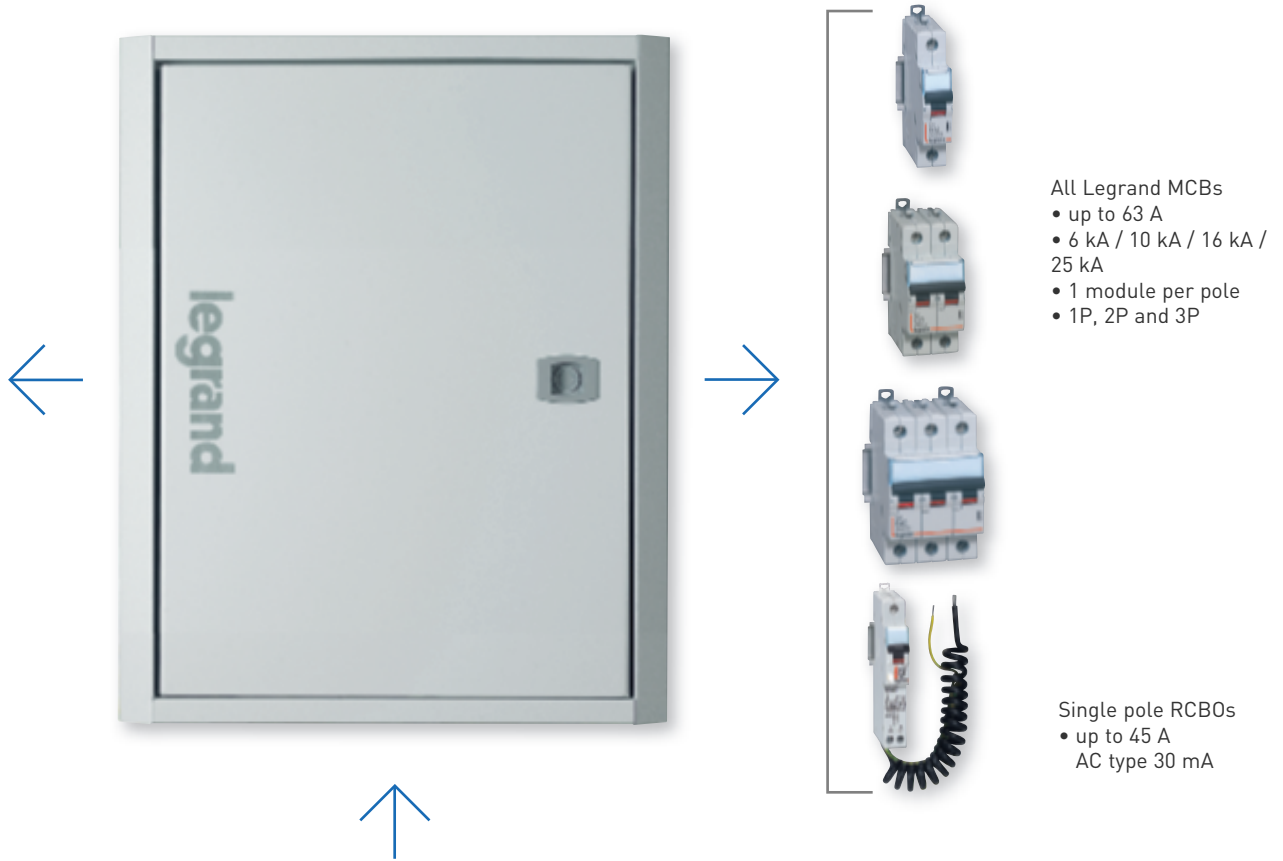
XL³-N

Comprehensive
and reliable range
for successful
site management

The XL³ -N 125 “MCB dedicated” and XL³ -N 250 enclosures provide the convenience of a comprehensive range with a minimum of catalogue numbers to meet the efficiency needs of any professional. Ideal for both commercial and residential environments, they are easy to use, combining easy assembly with great configuration flexibility thanks to their fixing kits and modular fittings.



TYPE TESTED | TOTALLY RELIABLE, THEY ARE TESTED AND APPROVED FOR THEIR COMPLIANCE WITH IEC 61439-3 STANDARD



Up to 8 sizes of enclosure
flush and surface mounting
to meet the full range
of requirements



XL³-N 125 & 250

Easy implementation: of the circuit breakers

The main circuit-breakers can be fixed on the busbar in only few quick and easy steps. Only few catalogue numbers of fixing kits for XL³-N 250 cabinets are enough to cover all the professional's needs in terms of circuit breakers: MCBs up to 63 A and MCCBs up to 250 A (DRX and DPX³ ranges).

The XL³-N 125 cabinets are supplied with the fixing kit.

XL³-N 125 MCB DEDICATED

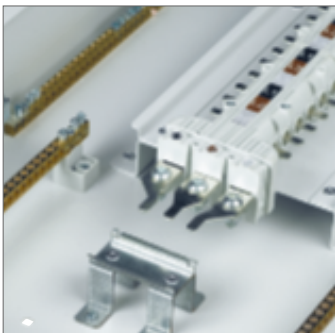


XL³-N 250

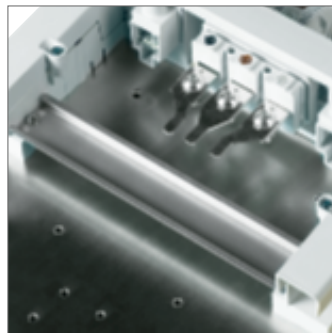


■ INSTALLATION OF THE MAIN CIRCUIT BREAKER

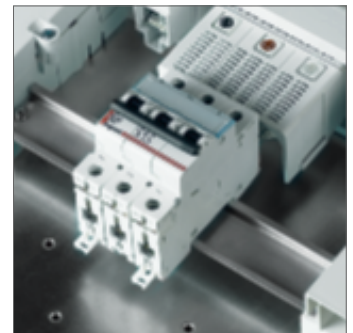
MCBS UP TO 63 A:



XL³-N 125 cabinets are already prepared to receive the main circuit breaker (rail and terminals).



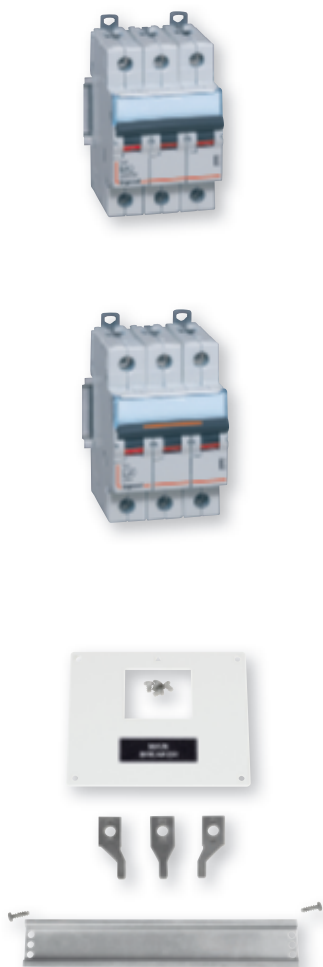
STEP 1 & 2:
Fitting the rail on the support frame plate and the terminals at the end of the busbar.



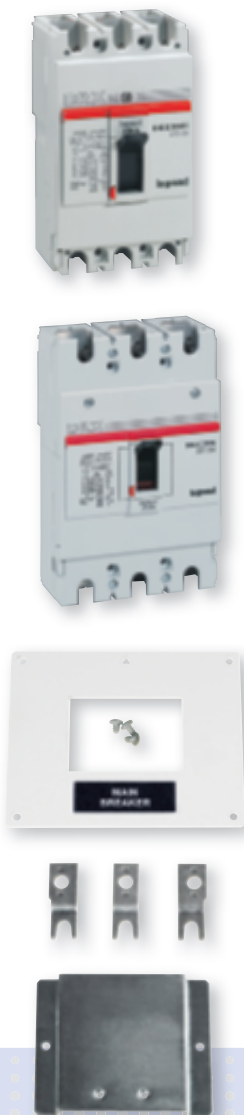
STEP 3:
Fixing the DIN-rail mounting circuit-breaker.

ON A RAIL

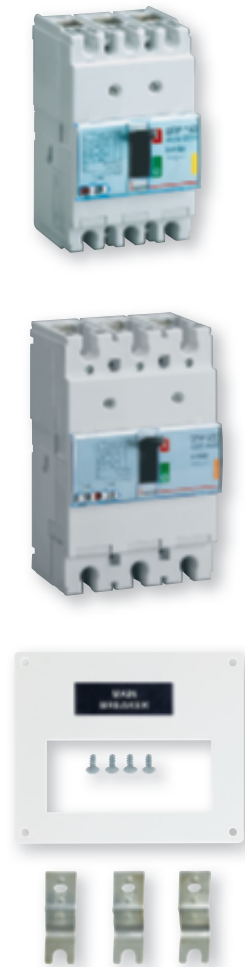
XL³-N 250



Kit for the entire range of Legrand DIN-rail mounting circuit-breakers up to 63 A.
1 module per pole



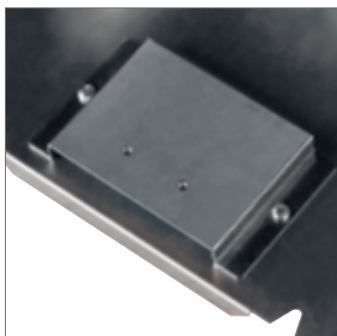
DRX 100 and 250 A kits



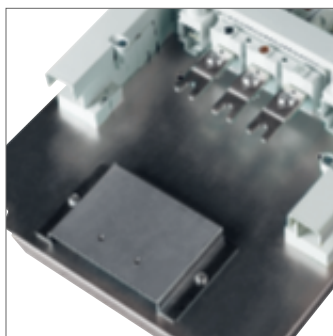
DPX³ 160 and 250 A kits
Additional fixing plate no required

ON A PLATE

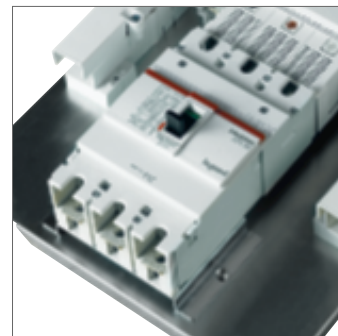
DRX 100 A AND 250 A MCCBS:



STEP 1:
Fixing the plate on the base of the enclosure.



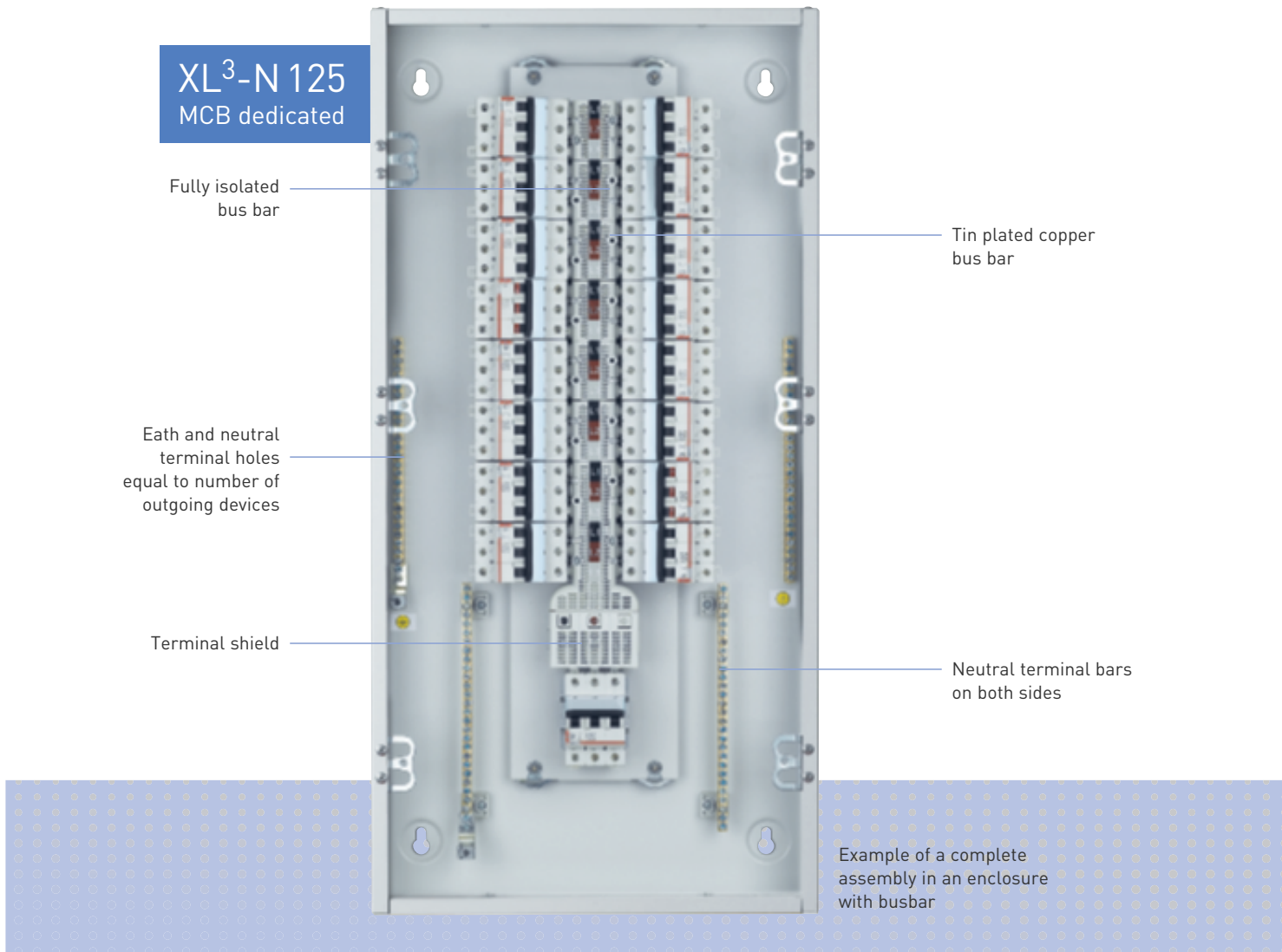
STEP 2:
Fitting the terminals at the end of the busbar.



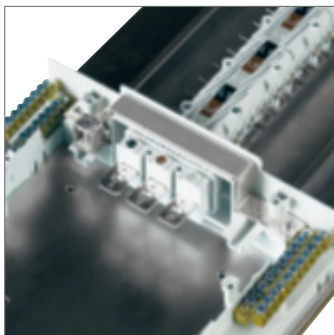
STEP 3:
Fixing the DRX MCCB.

Increased security, ergonomics and adaptability: the busbar

Insulation, labelling, corrosion resistance, terminal shields... There's no disguising the busbar's qualities which can adapt to each configuration with its 2 existing sizes (125 A and 250 A).



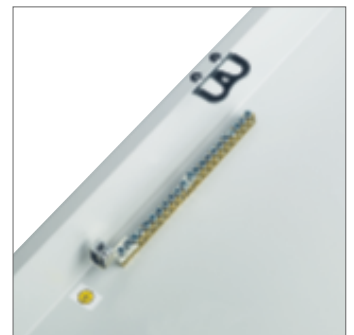
■ OTHER FEATURES



Neutral equally distributed on both sides of the distribution box



Terminal block holes equal to the number of outgoing devices



Brass earth terminal on the side of the distribution box. Insulated earth available as an option.



ECO FRIENDLY

NO EXCESS COPPER CONSUMPTION
AS THE BUSBAR IS ALWAYS SIZED
ACCORDING TO THE MAX. RATING
OF THE MAIN CIRCUIT-BREAKER

XL³-N 250

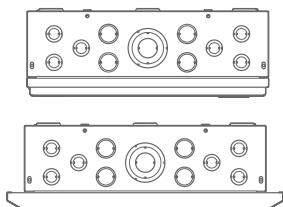
Fully isolated bus bar

Tin plated copper bus bar

Earth and neutral terminal holes equal to number of outgoing devices

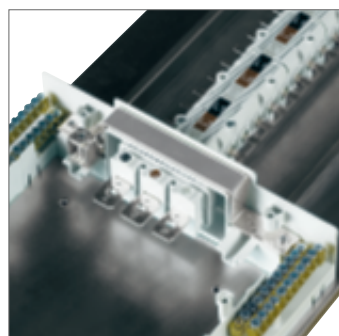
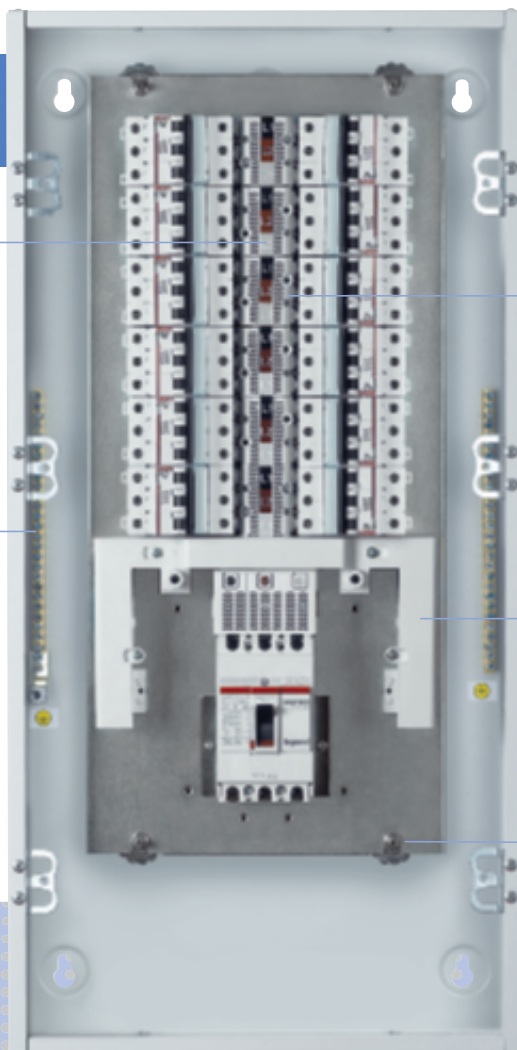
Protected neutral terminal bars on both sides

Adjustable pan assembly



Pre-cut knockouts.
Takes cable glands
(XL³-N 250 range only)
Can be replaced with IP 41 kit

Example of a complete assembly in an enclosure with busbar



Perfect safety thanks to the insulating shields covering the neutral terminal (XL³-N 250 range only)



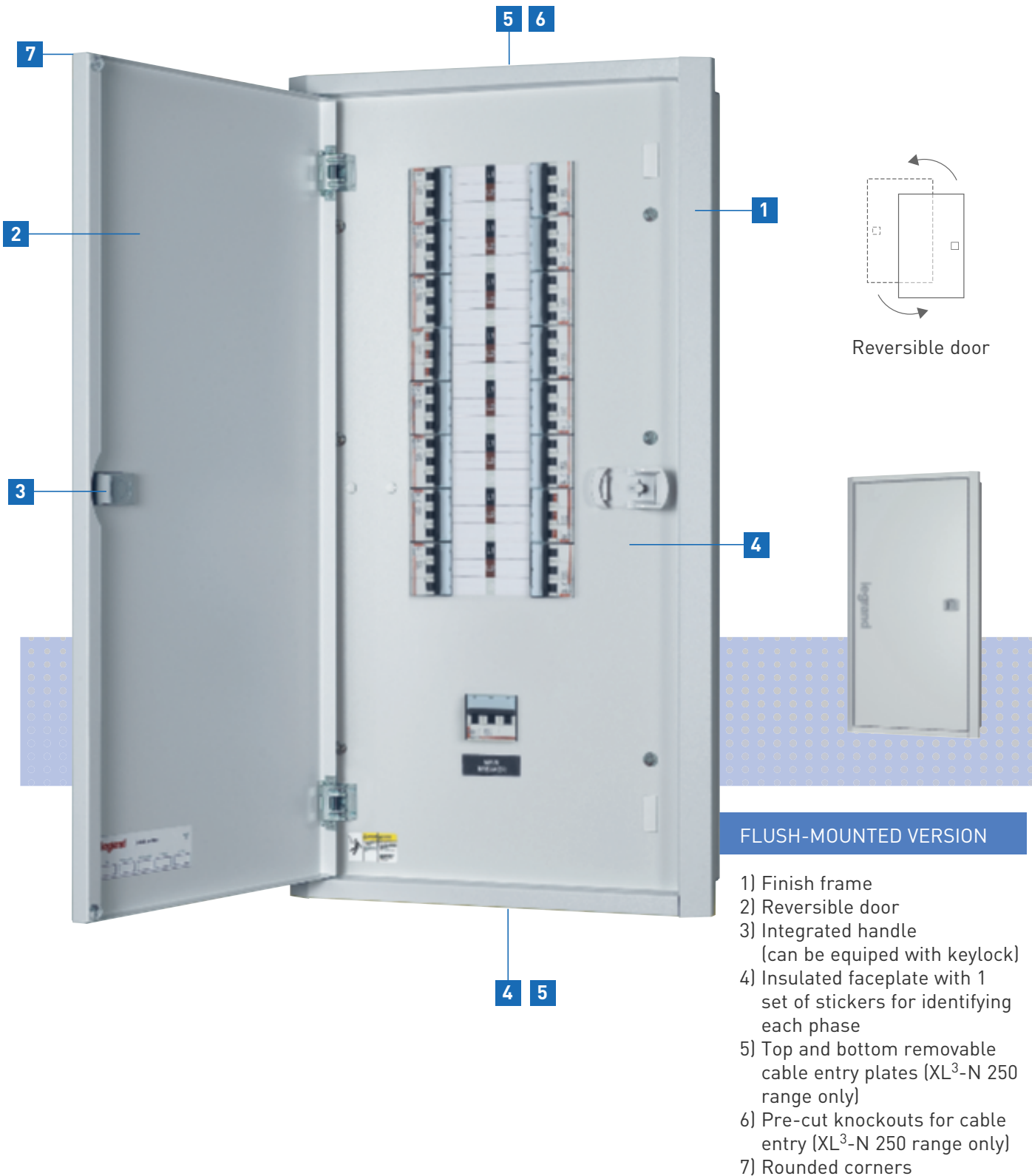
Holes for ventilation and labelling system of the terminals for phase identification.



Terminal shields for outputs not in use

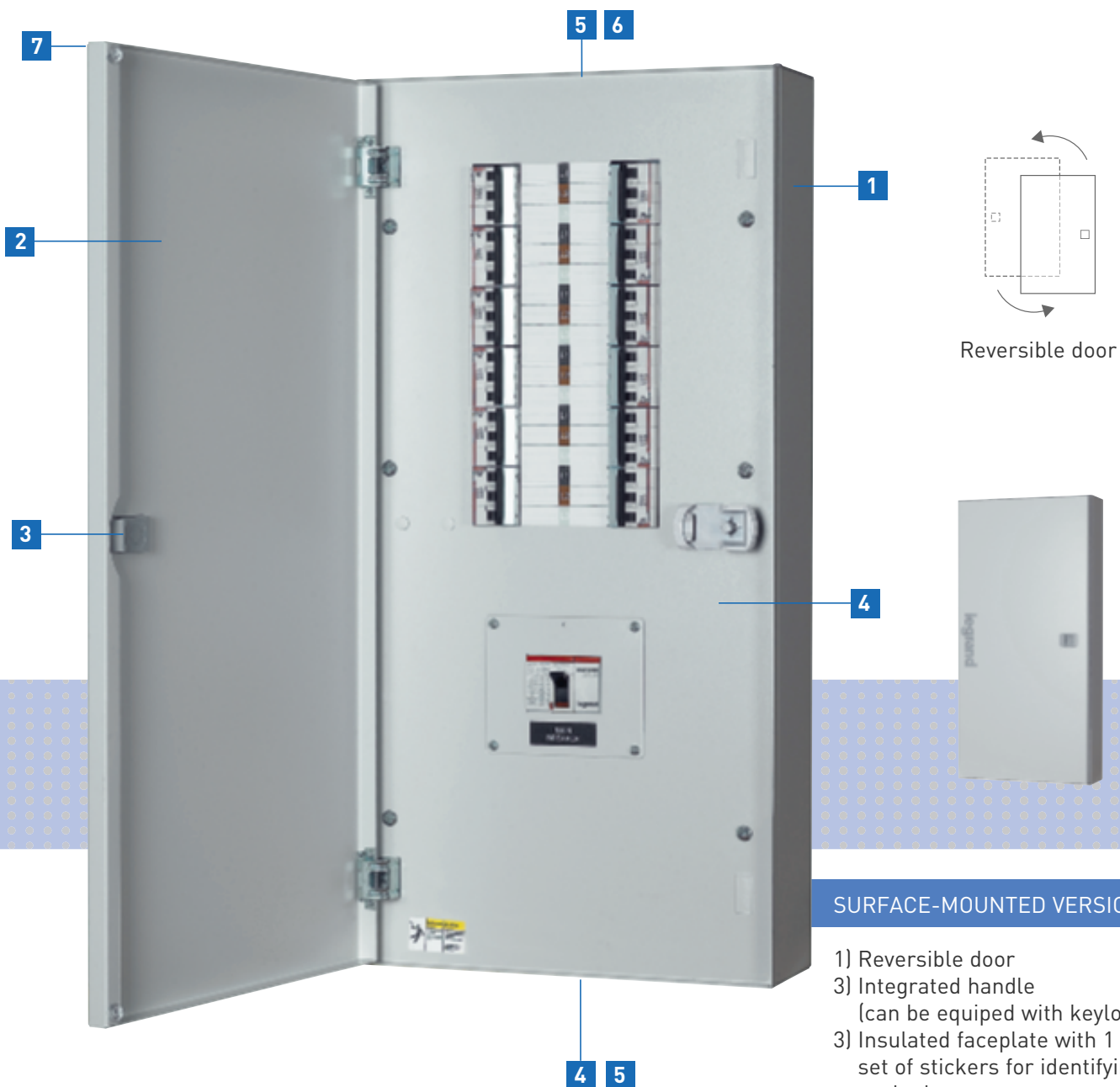
Aesthetics with a modern design

An impeccable finish for this new range of distribution boards. Made entirely of metal, they combine smooth corners with easier handling thanks to the reversible doors and easier cable access.



FLUSH-MOUNTED VERSION

- 1) Finish frame
- 2) Reversible door
- 3) Integrated handle (can be equipped with keylock)
- 4) Insulated faceplate with 1 set of stickers for identifying each phase
- 5) Top and bottom removable cable entry plates (XL³-N 250 range only)
- 6) Pre-cut knockouts for cable entry (XL³-N 250 range only)
- 7) Rounded corners



SURFACE-MOUNTED VERSION

- 1) Reversible door
- 3) Integrated handle (can be equipped with keylock)
- 3) Insulated faceplate with 1 set of stickers for identifying each phase
- 4) Top and bottom removable cable entry plates (XL³-N 250 range only)
- 5) Pre-cut knockouts for cable entry (XL³-N 250 range only)
- 6) Rounded corners

XL³-N 125 "MCB dedicated" and XL³-N 250 3-phase distribution boards

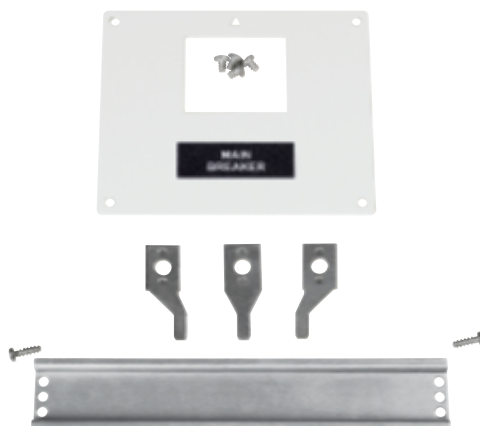
from 12 to 54 poles



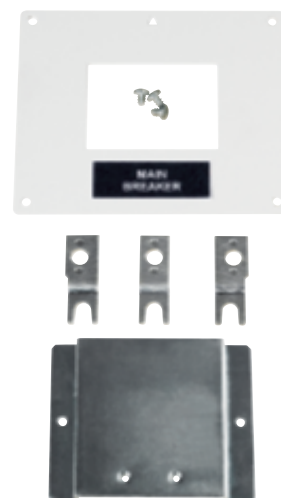
6 024 54



6 024 61



6 024 90



6 024 91

3-phase distribution boards for DIN-rail mounting circuit breakers; IP 40 - IK 08 with door

Conform to standard IEC 61439-3; Type tested; ASTA certified

Maximum voltage 480 V_~; Rated short-time withstand current (I_{cs}): 17 kA 0.2 s; Rated peak withstand current (I_{pk}): 34 kA

Ambient temperature: 50 °C continuously

Zinc coated metal; Grey RAL 7035

Supplied with: surface or flush-mounting box, reversible door with handle, faceplate, fully isolated tin plated copper busbar

The number of holes of earth and neutral terminal blocks are equal to the number of outgoing devices

Pack	Cat.Nos		XL³-N 125 "MCB dedicated" distribution boards	
	Flush-mounting	Surface mounting	Maximum rating 125 A	
	N	N	Equipped with mounting kit for main circuit breaker (3P, 1 module/pole, DIN rail mounting MCBs only)	
			No of poles (outgoing terminals)	No of 3P ways
1	6 027 20	6 027 40	12	4
1	6 027 21	6 027 41	18	6
1	6 027 22	6 027 42	24	8
1	6 027 23	6 027 43	30	10
1	6 027 24	6 027 44	36	12
1	6 027 25	6 027 45	42	14
1	6 027 26	6 027 46	48	16
1	6 027 27	6 027 47	54	18

Pack	Cat.Nos		XL³-N 250 distribution boards	
	Flush-mounting	Surface mounting	Maximum rating 125 A	
			To be equipped with mounting kit for main circuit breaker (DIN-rail mounting MCBs or DRX 100 or DPX ³ 160 MCCBs)	
			No of poles (outgoing terminals)	No of 3P ways
1	6 024 50	6 024 70	12	4
1	6 024 51	6 024 71	18	6
1	6 024 52	6 024 72	24	8
1	6 024 53	6 024 73	30	10
1	6 024 54	6 024 74	36	12
1	6 024 55	6 024 75	42	14
1	6 024 56	6 024 76	48	16
1	6 024 57	6 024 77	54	18
			Maximum rating 250 A	
			To be equipped with mounting kit for main circuit breaker (DRX 250 or DPX ³ 250 MCCBs)	
			No of poles (outgoing terminals)	No of 3P ways
1	6 024 58	6 024 78	18	6
1	6 024 59	6 024 79	24	8
1	6 024 60	6 024 80	30	10
1	6 024 61	6 024 81	36	12
1	6 024 62	6 024 82	42	14
1	6 024 63	6 024 83	48	16
1	6 024 64	6 024 84	54	18

Pack	Cat.Nos	Mounting kits for main circuit breakers
		Consisting of fixing device (DIN rail or fixing plate), faceplate and connection terminals
		For XL³-N 250 distribution boards
1	6 024 90	For 3P, 1 module/pole, DIN-rail mounting MCBs
1	6 024 91	For DRX 100 3P MCCBs
1	6 024 92	For DRX 250 3P MCCBs
		N
1	6 027 96	For DPX ³ 160 3P MCCBs
1	6 027 97	For DPX ³ 250 3P MCCBs

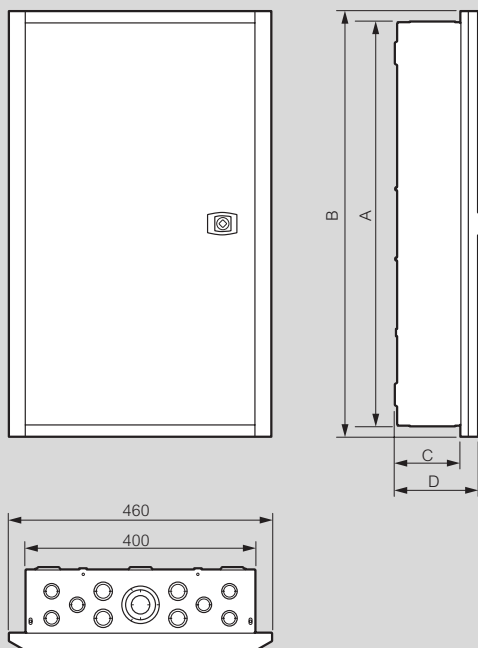
Pack	Cat.Nos	Accessories
		Fixing supports for terminal blocks
1	6 024 93	Kit consisting of 2 insulated fixing supports for terminal blocks for earth
		Insulating caps
20	6 024 94	For protecting unused outgoing terminals of the busbar
		Blanking plate RAL 7035
10	0 016 65	Separable into modules or 1/2 modules
		N
5	6 027 95	Key lock
		For XL ³ -N 125 "MCB dedicated" and XL ³ -N 250 distribution boards
		N
5	6 027 98	IP 41 kit
		For XL ³ -N 250 distribution boards

XL³-N 125 "MCB dedicated" and XL³-N 250 3-phase distribution boards

from 12 to 54 poles

Dimensions

Flush-mounting distribution boards

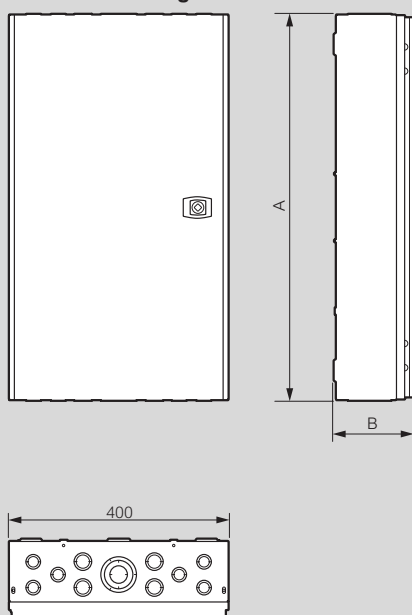


Cat.Nos	Number of poles	Dimensions (mm)			
		A	B	C	D
6027 20	12	486	525	94	125
6027 21	18	540	579	94	125
6027 22	24	594	633	94	125
6027 23	30	648	687	94	125
6027 24	36	702	741	94	125
6027 25	42	756	795	94	125
6027 26	48	810	849	94	125
6027 27	54	864	903	94	125
6024 50	12	594	633	114	145
6024 51/58	18	648	687	114	145
6024 52/59	24	702	741	114	145
6024 53/60	30	756	795	114	145
6024 54/61	36	810	849	114	145
6024 55/62	42	864	903	114	145
6024 56/63	48	918	957	114	145
6024 57/64	54	972	1011	114	145

Number of knockouts ⁽¹⁾ (top and bottom)	Size of the knockouts		
	∅18 / ∅27 mm	∅27 / ∅32 mm	∅32 / ∅52 / ∅65 mm
	6	4	1

1: For XL³-N 250 distribution boards only (no knockouts on XL³-N 125 "MCB dedicated" distribution boards)

Surface-mounting distribution boards



Cat.Nos	Number of poles	Dimensions (mm)	
		A	B
6027 40	12	486	125
6027 41	18	540	125
6027 42	24	594	125
6027 43	30	648	125
6027 44	36	702	125
6027 45	42	756	125
6027 46	48	810	125
6027 47	54	864	125
6024 50	12	594	145
6024 71/78	18	648	145
6024 72/79	24	702	145
6024 73/80	30	756	145
6024 74/81	36	810	145
6024 75/82	42	864	145
6024 76/83	48	918	145
6024 77/84	54	972	145

Number of knockouts ⁽²⁾ (top and bottom)	Size of the knockouts		
	∅18 / ∅27 mm	∅27 / ∅32 mm	∅32 / ∅52 / ∅65 mm
	6	4	1

2: For XL³-N 250 distribution boards only (no knockouts on XL³-N 125 "MCB dedicated" distribution boards)



FOLLOW US
ALSO ON

@ www.legrand.com

 www.youtube.com/legrand

 [twitter.com/@legrand](https://twitter.com/legrand)

EXB 13062 - July 2013 - Getty



World Headquarters
and International Department
87045 Limoges Cedex - France
☎ : + 33 (0) 5 55 06 87 87
Fax: + 33 (0) 5 55 06 74 55